

Wnt5a Antibody
Rabbit mAb
Catalog # AP91299**Specification**

Wnt5a Antibody - Product Information

Application	WB, FC, ICC
Primary Accession	P41221
Clonality	Monoclonal
Other Names	
hWNT5A; Protein Wnt5a; Wingless type MMTV integration site family member 5A; WNT 5A protein; WNT 5A protein precursor; WNT5A;	
Isotype	Rabbit IgG
Host	Rabbit
Calculated MW	42339 Da

Wnt5a Antibody - Additional Information

Dilution	WB~~1:1000 FC~~1:10~50 ICC~~N/A
Purification	Affinity-chromatography
Immunogen	A synthesized peptide derived from human Wnt5a
Description	Ligand for members of the frizzled family of seven transmembrane receptors. Can activate or inhibit canonical Wnt signaling, depending on receptor context. In the presence of FZD4, activates beta-catenin signaling. In the presence of ROR2, inhibits the canonical Wnt pathway by promoting beta-catenin degradation through a GSK3-independent pathway which involves down-regulation of beta-catenin-induced reporter gene expression.
Storage Condition and Buffer	Rabbit IgG in phosphate buffered saline , pH 7.4, 150mM NaCl, 0.02% sodium azide and 50% glycerol. Store at +4°C short term. Store at -20°C long term. Avoid freeze / thaw cycle.

Wnt5a Antibody - Protein Information**Name** WNT5A**Function**

Ligand for members of the frizzled family of seven transmembrane receptors. Can activate or inhibit canonical Wnt signaling, depending on receptor context. In the presence of FZD4, activates

beta-catenin signaling. In the presence of ROR2, inhibits the canonical Wnt pathway by promoting beta-catenin degradation through a GSK3-independent pathway which involves down-regulation of beta-catenin-induced reporter gene expression (By similarity). Suppression of the canonical pathway allows chondrogenesis to occur and inhibits tumor formation. Stimulates cell migration. Decreases proliferation, migration, invasiveness and clonogenicity of carcinoma cells and may act as a tumor suppressor (PubMed:15735754). Mediates motility of melanoma cells (PubMed:17426020). Required during embryogenesis for extension of the primary anterior-posterior axis and for outgrowth of limbs and the genital tubercle. Inhibits type II collagen expression in chondrocytes (By similarity).

Cellular Location

Secreted, extracellular space, extracellular matrix. Secreted

Tissue Location

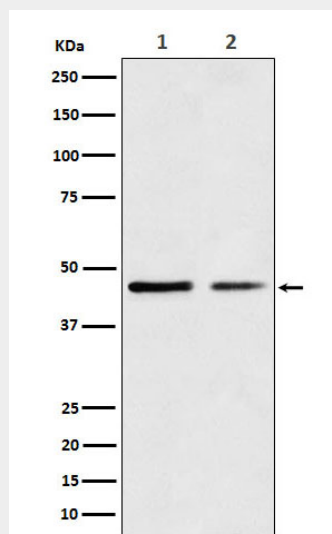
Expression is increased in differentiated thyroid carcinomas compared to normal thyroid tissue and anaplastic thyroid tumors where expression is low or undetectable. Expression is found in thyrocytes but not in stromal cells (at protein level) (PubMed:15735754). Detected in neonate heart and lung (PubMed:8288227)

Wnt5a Antibody - Protocols

Provided below are standard protocols that you may find useful for product applications.

- [Western Blot](#)
- [Blocking Peptides](#)
- [Dot Blot](#)
- [Immunohistochemistry](#)
- [Immunofluorescence](#)
- [Immunoprecipitation](#)
- [Flow Cytometry](#)
- [Cell Culture](#)

Wnt5a Antibody - Images



Western blot analysis of Wnt5a expression in HeLa cell lysate.