

**CLRN3 Antibody (C-term)**  
**Affinity Purified Rabbit Polyclonal Antibody (Pab)**  
**Catalog # AP9129b****Specification**

---

**CLRN3 Antibody (C-term) - Product Information**

Application	FC, WB,E
Primary Accession	<a href="#">Q8NCR9</a>
Reactivity	Human
Host	Rabbit
Clonality	Polyclonal
Isotype	Rabbit IgG
Calculated MW	25321
Antigen Region	196-222

**CLRN3 Antibody (C-term) - Additional Information****Gene ID** 119467**Other Names**

Clarin-3, Transmembrane protein 12, Usher syndrome type-3A-like protein 1, CLRN3, TMEM12, USH3AL1

**Target/Specificity**

This CLRN3 antibody is generated from rabbits immunized with a KLH conjugated synthetic peptide between 196-222 amino acids from the C-terminal region of human CLRN3.

**Dilution**

FC~~1:10~50

WB~~1:1000

E~~Use at an assay dependent concentration.

**Format**

Purified polyclonal antibody supplied in PBS with 0.09% (W/V) sodium azide. This antibody is purified through a protein A column, followed by peptide affinity purification.

**Storage**

Maintain refrigerated at 2-8°C for up to 2 weeks. For long term storage store at -20°C in small aliquots to prevent freeze-thaw cycles.

**Precautions**

CLRN3 Antibody (C-term) is for research use only and not for use in diagnostic or therapeutic procedures.

**CLRN3 Antibody (C-term) - Protein Information****Name** CLRN3

**Synonyms** TMEM12, USH3AL1

**Cellular Location**

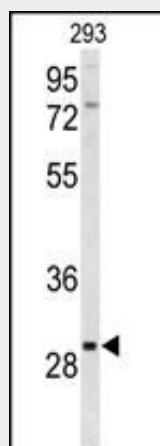
Membrane; Multi-pass membrane protein

**CLRN3 Antibody (C-term) - Protocols**

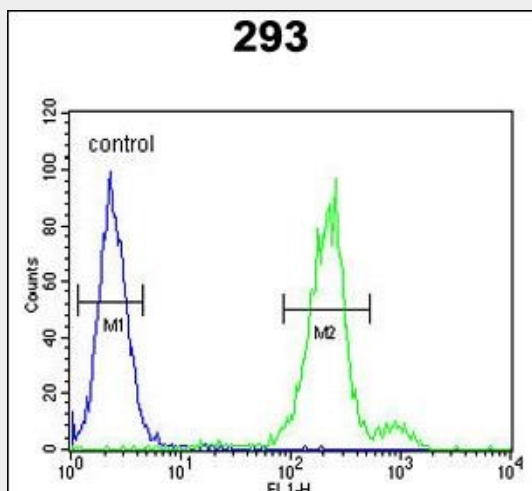
Provided below are standard protocols that you may find useful for product applications.

- [Western Blot](#)
- [Blocking Peptides](#)
- [Dot Blot](#)
- [Immunohistochemistry](#)
- [Immunofluorescence](#)
- [Immunoprecipitation](#)
- [Flow Cytometry](#)
- [Cell Culture](#)

**CLRN3 Antibody (C-term) - Images**



Western blot analysis of CLRN3 Antibody (C-term) (Cat. #AP9129b) in 293 cell line lysates (35ug/lane). CLRN3 (arrow) was detected using the purified Pab.



CLRN3 Antibody (C-term) (Cat. #AP9129b) flow cytometric analysis of 293 cells (right histogram)

compared to a negative control cell (left histogram).FITC-conjugated goat-anti-rabbit secondary antibodies were used for the analysis.

**CLRN3 Antibody (C-term) - References**

Fields,R.R., et.al., Am. J. Hum. Genet. 71 (3), 607-617 (2002)