

DR5 Antibody
Rabbit mAb
Catalog # AP91307

Specification

DR5 Antibody - Product Information

Application	WB, FC, IP
Primary Accession	O14763
Clonality	Monoclonal
Other Names	
Death receptor 5; TRAIL receptor 2; TRAIL-R2; CD262; TNFRSF10B; DR5; KILLER; TRAILR2; TRICK2; ZTNFR9;	
Isotype	Rabbit IgG
Host	Rabbit
Calculated MW	47878 Da

DR5 Antibody - Additional Information

Dilution	WB~~1:1000 FC~~1:10~50 IP~~N/A
Purification	Affinity-chromatography
Immunogen	A synthesized peptide derived from human DR5
Description	Plays an important role in the regulation of apoptosis in various physiological systems. Promotes the activation of NF-kappa-B. Essential for ER stress-induced apoptosis.
Storage Condition and Buffer	Rabbit IgG in phosphate buffered saline , pH 7.4, 150mM NaCl, 0.02% sodium azide and 50% glycerol. Store at +4°C short term. Store at -20°C long term. Avoid freeze / thaw cycle.

DR5 Antibody - Protein Information

Name TNFRSF10B

Synonyms DR5, KILLER, TRAILR2, TRICK2, ZTNFR9

Function

Receptor for the cytotoxic ligand TNFSF10/TRAIL (PubMed:10549288). The adapter molecule FADD recruits caspase-8 to the activated receptor. The resulting death-inducing signaling complex (DISC) performs caspase-8 proteolytic activation which initiates the subsequent cascade of caspases (aspartate-specific cysteine proteases) mediating apoptosis. Promotes the activation of NF-kappa-B. Essential for ER stress-induced apoptosis.

Cellular Location

Membrane; Single-pass type I membrane protein.

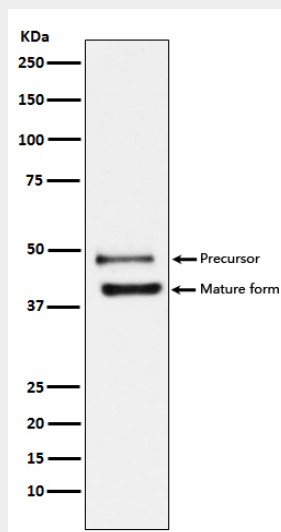
Tissue Location

Widely expressed in adult and fetal tissues; very highly expressed in tumor cell lines such as HeLaS3, K-562, HL-60, SW480, A-549 and G-361; highly expressed in heart, peripheral blood lymphocytes, liver, pancreas, spleen, thymus, prostate, ovary, uterus, placenta, testis, esophagus, stomach and throughout the intestinal tract; not detectable in brain

DR5 Antibody - Protocols

Provided below are standard protocols that you may find useful for product applications.

- [Western Blot](#)
- [Blocking Peptides](#)
- [Dot Blot](#)
- [Immunohistochemistry](#)
- [Immunofluorescence](#)
- [Immunoprecipitation](#)
- [Flow Cytometry](#)
- [Cell Culture](#)

DR5 Antibody - Images

Western blot analysis of DR5 expression in HeLa cell lysate.