

**BubR1 Antibody**  
**Rabbit mAb**  
**Catalog # AP91311****Specification**

---

**BubR1 Antibody - Product Information**

Application	WB, IHC, FC, IP
Primary Accession	<a href="#">O60566</a>
Reactivity	Rat
Clonality	Monoclonal
<b>Other Names</b>	
hBUBR1; Mitotic checkpoint kinase MAD3L Protein SSK1; BUB1B; BUBR1; MAD3L; SSK1;	
Isotype	Rabbit IgG
Host	Rabbit
Calculated MW	119545 Da

**BubR1 Antibody - Additional Information**

Dilution	WB~~1:1000 IHC~~1:100~500 FC~~1:10~50 IP~~N/A
Purification	Affinity-chromatography
Immunogen	A synthesized peptide derived from human BubR1
Description	Essential component of the mitotic checkpoint. Required for normal mitosis progression. The mitotic checkpoint delays anaphase until all chromosomes are properly attached to the mitotic spindle. One of its checkpoint functions is to inhibit the activity of the anaphase-promoting complex/cyclosome (APC/C) by blocking the binding of CDC20 to APC/C, independently of its kinase activity. The other is to monitor kinetochore activities that depend on the kinetochore motor CENPE. Required for kinetochore localization of CENPE.
Storage Condition and Buffer	Rabbit IgG in phosphate buffered saline , pH 7.4, 150mM NaCl, 0.02% sodium azide and 50% glycerol. Store at +4°C short term. Store at -20°C long term. Avoid freeze / thaw cycle.

**BubR1 Antibody - Protein Information****Name** BUB1B

**Synonyms** BUBR1, MAD3L, SSK1

**Function**

Essential component of the mitotic checkpoint. Required for normal mitosis progression. The mitotic checkpoint delays anaphase until all chromosomes are properly attached to the mitotic spindle. One of its checkpoint functions is to inhibit the activity of the anaphase- promoting complex/cyclosome (APC/C) by blocking the binding of CDC20 to APC/C, independently of its kinase activity. The other is to monitor kinetochore activities that depend on the kinetochore motor CENPE. Required for kinetochore localization of CENPE. Negatively regulates PLK1 activity in interphase cells and suppresses centrosome amplification. Also implicated in triggering apoptosis in polyploid cells that exit aberrantly from mitotic arrest. May play a role for tumor suppression.

**Cellular Location**

Cytoplasm. Nucleus. Chromosome, centromere, kinetochore. Cytoplasm, cytoskeleton, microtubule organizing center, centrosome. Note=Cytoplasmic in interphase cells. Associates with the kinetochores in early prophase. Kinetochore localization requires BUB1, PLK1 and KNL1

**Tissue Location**

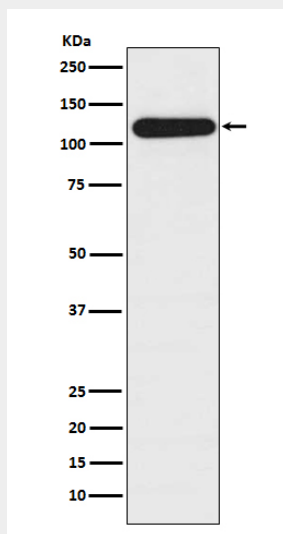
Highly expressed in thymus followed by spleen. Preferentially expressed in tissues with a high mitotic index

**BubR1 Antibody - Protocols**

Provided below are standard protocols that you may find useful for product applications.

- [Western Blot](#)
- [Blocking Peptides](#)
- [Dot Blot](#)
- [Immunohistochemistry](#)
- [Immunofluorescence](#)
- [Immunoprecipitation](#)
- [Flow Cytometry](#)
- [Cell Culture](#)

**BubR1 Antibody - Images**



Western blot analysis of BubR1 expression in HepG2 cell lysate.