

alpha Sarcoglycan Antibody
Rabbit mAb
Catalog # AP91319**Specification**

alpha Sarcoglycan Antibody - Product Information

Application	WB, IHC, IP
Primary Accession	Q16586
Reactivity	Rat
Clonality	Monoclonal
Other Names	
50DAG; 50kD DAG; adhalin; ADL; Alpha SG; Alpha-sarcoglycan; Asg; DAG2; DMDA2; Dystroglycan 2; LGMD2D; SCARMD1; Sgca;	
Isotype	Rabbit IgG
Host	Rabbit
Calculated MW	42875 Da

alpha Sarcoglycan Antibody - Additional Information

Dilution	WB~~1:1000 IHC~~1:100~500 IP~~N/A
Purification	Affinity-chromatography
Immunogen	A synthesized peptide derived from human alpha Sarcoglycan
Description	Component of the sarcoglycan complex, a subcomplex of the dystrophin-glycoprotein complex which forms a link between the F-actin cytoskeleton and the extracellular matrix.
Storage Condition and Buffer	Rabbit IgG in phosphate buffered saline , pH 7.4, 150mM NaCl, 0.02% sodium azide and 50% glycerol. Store at +4°C short term. Store at -20°C long term. Avoid freeze / thaw cycle.

alpha Sarcoglycan Antibody - Protein Information**Name** SGCA**Synonyms** ADL, DAG2**Function**

Component of the sarcoglycan complex, a subcomplex of the dystrophin-glycoprotein complex which forms a link between the F-actin cytoskeleton and the extracellular matrix.

Cellular Location

Cell membrane, sarcolemma; Single-pass type I membrane protein. Cytoplasm, cytoskeleton

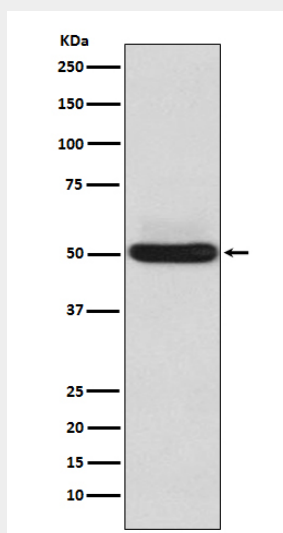
Tissue Location

Most strongly expressed in skeletal muscle. Also expressed in cardiac muscle and, at much lower levels, in lung. In the fetus, most abundant in cardiac muscle and, at lower levels, in lung. Also detected in liver and kidney. Not expressed in brain

alpha Sarcoglycan Antibody - Protocols

Provided below are standard protocols that you may find useful for product applications.

- [Western Blot](#)
- [Blocking Peptides](#)
- [Dot Blot](#)
- [Immunohistochemistry](#)
- [Immunofluorescence](#)
- [Immunoprecipitation](#)
- [Flow Cytometry](#)
- [Cell Culture](#)

alpha Sarcoglycan Antibody - Images

Western blot analysis of alpha Sarcoglycan expression in Human skeletal muscle lysate.