

delta Sarcoglycan Antibody
Rabbit mAb
Catalog # AP91321**Specification**

delta Sarcoglycan Antibody - Product Information

Application	WB, IHC, IP
Primary Accession	Q92629
Clonality	Monoclonal
Other Names	
35DAG; CMD1L; DAGD; Delta-sarcoglycan; LGMD2F; SG delta; SGCD; SGCDP;	
Isotype	Rabbit IgG
Host	Rabbit
Calculated MW	32071 Da

delta Sarcoglycan Antibody - Additional Information

Dilution	WB~~1:1000 IHC~~1:100~500 IP~~N/A
Purification	Affinity-chromatography
Immunogen	A synthesized peptide derived from human delta Sarcoglycan
Description	Component of the sarcoglycan complex, a subcomplex of the dystrophin-glycoprotein complex which forms a link between the F-actin cytoskeleton and the extracellular matrix.
Storage Condition and Buffer	Rabbit IgG in phosphate buffered saline , pH 7.4, 150mM NaCl, 0.02% sodium azide and 50% glycerol. Store at +4°C short term. Store at -20°C long term. Avoid freeze / thaw cycle.

delta Sarcoglycan Antibody - Protein Information**Name** SGCD**Function**

Component of the sarcoglycan complex, a subcomplex of the dystrophin-glycoprotein complex which forms a link between the F-actin cytoskeleton and the extracellular matrix.

Cellular Location

Cell membrane, sarcolemma; Single-pass type II membrane protein. Cytoplasm, cytoskeleton

Tissue Location

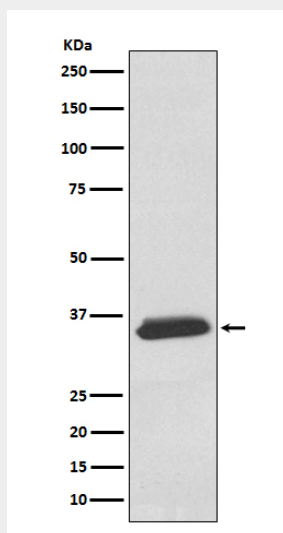
Most strongly expressed in skeletal and cardiac muscle. Also detected in smooth muscle. Weak expression in brain and lung

delta Sarcoglycan Antibody - Protocols

Provided below are standard protocols that you may find useful for product applications.

- [Western Blot](#)
- [Blocking Peptides](#)
- [Dot Blot](#)
- [Immunohistochemistry](#)
- [Immunofluorescence](#)
- [Immunoprecipitation](#)
- [Flow Cytometry](#)
- [Cell Culture](#)

delta Sarcoglycan Antibody - Images



Western blot analysis of delta Sarcoglycan expression in Human fetal heart lysate.