

**CRYAB Antibody**  
**Rabbit mAb**  
**Catalog # AP91327****Specification****CRYAB Antibody - Product Information**

Application **WB, IHC, ICC, IP**  
Primary Accession **[P02511](#)**  
Reactivity **Rat**  
Clonality **Monoclonal**

**Other Names**

AACRYA; Alpha B crystallin; Alpha-crystallin B chain; CRYA2; Cryab; Crystallin alpha B; CTPP2; Heat shock 20 kD like protein; HspB5;

Isotype **Rabbit IgG**  
Host **Rabbit**  
Calculated MW **20159 Da**

**CRYAB Antibody - Additional Information**

Dilution **WB~~1:1000**  
**IHC~~1:100~500**  
**ICC~~N/A**  
**IP~~N/A**  
Purification **Affinity-chromatography**  
Immunogen **A synthesized peptide derived from human CRYAB**  
Description **May contribute to the transparency and refractive index of the lens.**  
Storage Condition and Buffer **Rabbit IgG in phosphate buffered saline , pH 7.4, 150mM NaCl, 0.02% sodium azide and 50% glycerol. Store at +4°C short term. Store at -20°C long term. Avoid freeze / thaw cycle.**

**CRYAB Antibody - Protein Information**

**Name** CRYAB ([HGNC:2389](#))

**Synonyms** CRYA2, HSPB5

**Function**

May contribute to the transparency and refractive index of the lens. Has chaperone-like activity, preventing aggregation of various proteins under a wide range of stress conditions. In lens epithelial cells, stabilizes the ATP6V1A protein, preventing its degradation by the proteasome (By similarity).

**Cellular Location**

Cytoplasm. Nucleus Secreted. Lysosome {ECO:0000250|UniProtKB:P23927}. Note=Translocates to

the nucleus during heat shock and resides in sub-nuclear structures known as SC35 speckles or nuclear splicing speckles (PubMed:19464326). Localizes at the Z- bands and the intercalated disk in cardiomyocytes (PubMed:28493373) Can be secreted; the secretion is dependent on protein unfolding and facilitated by the cargo receptor TMED10; it results in protein translocation from the cytoplasm into the ERGIC (endoplasmic reticulum- Golgi intermediate compartment) followed by vesicle entry and secretion (PubMed:32272059).

#### **Tissue Location**

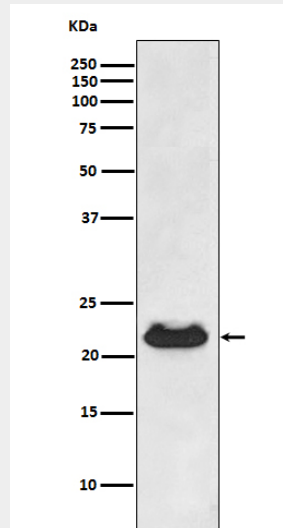
Lens as well as other tissues (PubMed:2387586, PubMed:838078). Expressed in myocardial tissue (PubMed:28493373)

#### **CRYAB Antibody - Protocols**

Provided below are standard protocols that you may find useful for product applications.

- [Western Blot](#)
- [Blocking Peptides](#)
- [Dot Blot](#)
- [Immunohistochemistry](#)
- [Immunofluorescence](#)
- [Immunoprecipitation](#)
- [Flow Cytometry](#)
- [Cell Culture](#)

#### **CRYAB Antibody - Images**



Western blot analysis of CRYAB expression in human fetal heart lysate.