

SNAP25 Antibody
Rabbit mAb
Catalog # AP91329**Specification**

SNAP25 Antibody - Product Information

Application	WB, ICC, IP
Primary Accession	P60880
Reactivity	Rat
Clonality	Monoclonal

Other Names

Synaptosomal-associated protein 25; SNAP-25; Super protein; SUP; Synaptosomal-associated 25 kDa protein; SNAP25; SNAP;

Isotype	Rabbit IgG
Host	Rabbit
Calculated MW	23315 Da

SNAP25 Antibody - Additional Information

Dilution	WB~~1:1000 ICC~~N/A IP~~N/A
Purification	Affinity-chromatography
Immunogen	A synthesized peptide derived from human SNAP25
Description	SNAP25 forms a core complex with the SNARE proteins syntaxin and synaptobrevin to mediate synaptic vesicle fusion with the plasma membrane during Ca ²⁺ -dependent exocytosis. This complex is responsible for exocytosis of the neurotransmitter γ -aminobutyric acid (GABA). Neurotransmitter release is inhibited by proteolysis of SNAP25 by botulinum toxins A and E. SNAP25 plays a secondary role as a Q-SNARE involved in endosome fusion; the protein is associated with genetic susceptibility to attention-deficit hyperactivity disorder (ADHD).
Storage Condition and Buffer	Rabbit IgG in phosphate buffered saline , pH 7.4, 150mM NaCl, 0.02% sodium azide and 50% glycerol. Store at +4°C short term. Store at -20°C long term. Avoid freeze / thaw cycle.

SNAP25 Antibody - Protein Information

Name SNAP25**Synonyms** SNAP**Function**

t-SNARE involved in the molecular regulation of neurotransmitter release. May play an important role in the synaptic function of specific neuronal systems. Associates with proteins involved in vesicle docking and membrane fusion. Regulates plasma membrane recycling through its interaction with CENPF. Modulates the gating characteristics of the delayed rectifier voltage-dependent potassium channel KCNB1 in pancreatic beta cells.

Cellular Location

Cytoplasm, perinuclear region {ECO:0000250|UniProtKB:P60879}. Cell membrane {ECO:0000250|UniProtKB:P60881}; Lipid-anchor {ECO:0000250|UniProtKB:P60879}. Synapse, synaptosome {ECO:0000250|UniProtKB:P60879}. Photoreceptor inner segment {ECO:0000250|UniProtKB:P60879}. Note=Membrane association requires palmitoylation. Expressed throughout cytoplasm, concentrating at the perinuclear region. Colocalizes with KCNB1 at the cell membrane (By similarity). Colocalizes with PLCL1 at the cell membrane (By similarity). {ECO:0000250|UniProtKB:P60879, ECO:0000250|UniProtKB:P60881}

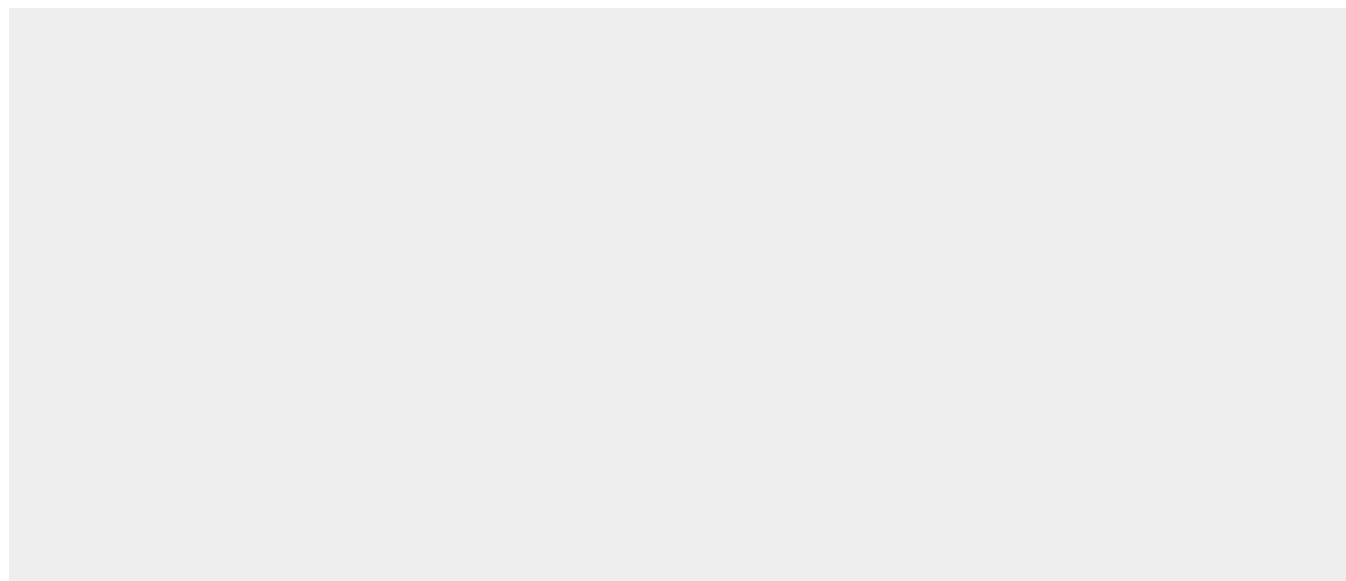
Tissue Location

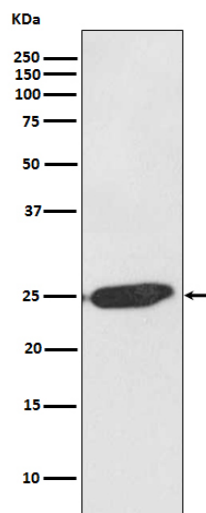
Neurons of the neocortex, hippocampus, piriform cortex, anterior thalamic nuclei, pontine nuclei, and granule cells of the cerebellum

SNAP25 Antibody - Protocols

Provided below are standard protocols that you may find useful for product applications.

- [Western Blot](#)
- [Blocking Peptides](#)
- [Dot Blot](#)
- [Immunohistochemistry](#)
- [Immunofluorescence](#)
- [Immunoprecipitation](#)
- [Flow Cytometry](#)
- [Cell Culture](#)

SNAP25 Antibody - Images



Western blot analysis of SNAP25 expression in SH-SY5Y cell lysate.