

PAI1 Antibody
Rabbit mAb
Catalog # AP91331**Specification**

PAI1 Antibody - Product Information

Application	WB, FC, ICC, IP
Primary Accession	P05121
Clonality	Monoclonal
Other Names	
PAI-1; PAI-1; PAI; Endothelial plasminogen activator inhibitor; SERPINE1; PAI1; PLANH1; Serpine 1;	
Isotype	Rabbit IgG
Host	Rabbit
Calculated MW	45060 Da

PAI1 Antibody - Additional Information

Dilution	WB~~1:1000 FC~~1:10~50 ICC~~N/A IP~~N/A
Purification	Affinity-chromatography
Immunogen	A synthesized peptide derived from human PAI1
Description	This inhibitor acts as 'bait' for tissue plasminogen activator, urokinase, and protein C. Its rapid interaction with TPA may function as a major control point in the regulation of fibrinolysis.
Storage Condition and Buffer	Rabbit IgG in phosphate buffered saline , pH 7.4, 150mM NaCl, 0.02% sodium azide and 50% glycerol. Store at +4°C short term. Store at -20°C long term. Avoid freeze / thaw cycle.

PAI1 Antibody - Protein Information**Name** SERPINE1**Synonyms** PAI1, PLANH1**Function**

Serine protease inhibitor. Inhibits TMPRSS7 (PubMed:15853774). Is a primary inhibitor of tissue-type plasminogen activator (PLAT) and urokinase-type plasminogen activator (PLAU). As PLAT inhibitor, it is required for fibrinolysis down-regulation and is responsible for the controlled degradation of blood clots (PubMed:17912461, PubMed:17912461).

[8481516](http://www.uniprot.org/citations/8481516), PubMed: [9207454](http://www.uniprot.org/citations/9207454), PubMed: [21925150](http://www.uniprot.org/citations/21925150)). As PLAU inhibitor, it is involved in the regulation of cell adhesion and spreading (PubMed: [9175705](http://www.uniprot.org/citations/9175705)). Acts as a regulator of cell migration, independently of its role as protease inhibitor (PubMed: [15001579](http://www.uniprot.org/citations/15001579), PubMed: [9168821](http://www.uniprot.org/citations/9168821)). It is required for stimulation of keratinocyte migration during cutaneous injury repair (PubMed: [18386027](http://www.uniprot.org/citations/18386027)). It is involved in cellular and replicative senescence (PubMed: [16862142](http://www.uniprot.org/citations/16862142)). Plays a role in alveolar type 2 cells senescence in the lung (By similarity). Is involved in the regulation of cementogenic differentiation of periodontal ligament stem cells, and regulates odontoblast differentiation and dentin formation during odontogenesis (PubMed: [25808697](http://www.uniprot.org/citations/25808697), PubMed: [27046084](http://www.uniprot.org/citations/27046084)).

Cellular Location

Secreted.

Tissue Location

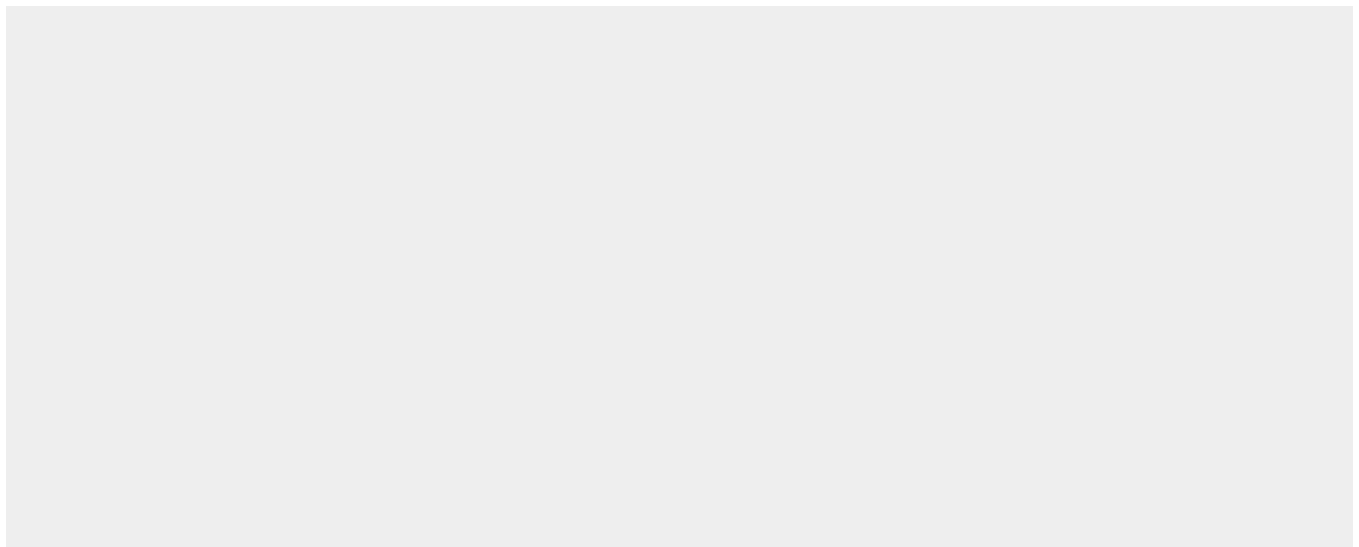
Expressed in endothelial cells (PubMed:2430793, PubMed:3097076). Found in plasma, platelets, and hepatoma and fibrosarcoma cells.

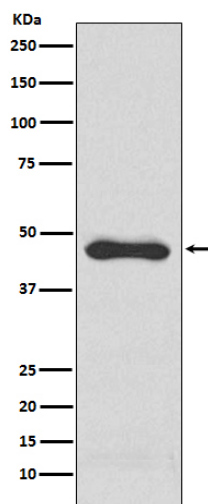
PAI1 Antibody - Protocols

Provided below are standard protocols that you may find useful for product applications.

- [Western Blot](#)
- [Blocking Peptides](#)
- [Dot Blot](#)
- [Immunohistochemistry](#)
- [Immunofluorescence](#)
- [Immunoprecipitation](#)
- [Flow Cytometry](#)
- [Cell Culture](#)

PAI1 Antibody - Images





Western blot analysis of PAI1 expression in HepG2 cell lysate.