

**BNIP1 Antibody**  
**Rabbit mAb**  
**Catalog # AP91333****Specification**

---

**BNIP1 Antibody - Product Information**

Application	<b>WB, IHC</b>
Primary Accession	<a href="#">Q12981</a>
Reactivity	<b>Rat</b>
Clonality	<b>Monoclonal</b>

**Other Names**

BCL2 adenovirus E1B 19kD interacting protein 1; BNIP1; Nip1; sec20; SEC20L;  
Transformation-related gene 8 protein; TRG8; Vesicle transport protein SEC20;

Isotype	<b>Rabbit IgG</b>
Host	<b>Rabbit</b>
Calculated MW	<b>26132 Da</b>

**BNIP1 Antibody - Additional Information**

Dilution	<b>WB~~1:1000</b> <b>IHC~~1:100~500</b>
Purification	<b>Affinity-chromatography</b>
Immunogen	<b>A synthesized peptide derived from human BNIP1</b>
Description	<b>SNARE that may be involved in targeting and fusion of Golgi-derived retrograde transport vesicles with the ER. Required for maintenance of ER network. Implicated in the suppression of cell death.</b>
Storage Condition and Buffer	<b>Rabbit IgG in phosphate buffered saline , pH 7.4, 150mM NaCl, 0.02% sodium azide and 50% glycerol. Store at +4°C short term. Store at -20°C long term. Avoid freeze / thaw cycle.</b>

**BNIP1 Antibody - Protein Information****Name** BNIP1**Synonyms** NIP1, SEC20L**Function**

As part of a SNARE complex may be involved in endoplasmic reticulum membranes fusion and be required for the maintenance of endoplasmic reticulum organization (PubMed:<a href="http://www.uniprot.org/citations/15272311" target="\_blank">15272311</a>). Also plays a role in apoptosis (PubMed:<a href="http://www.uniprot.org/citations/15272311" target="\_blank">15272311</a>, PubMed:<a href="http://www.uniprot.org/citations/23896122" target="\_blank">23896122</a>, PubMed:<a href="http://www.uniprot.org/citations/7954800" target="\_blank">7954800</a>).

target="\_blank">7954800</a>). It is for instance required for endoplasmic reticulum stress-induced apoptosis (PubMed:<a href="http://www.uniprot.org/citations/23896122" target="\_blank">23896122</a>). As a substrate of RNF185 interacting with SQSTM1, might also be involved in mitochondrial autophagy (Probable).

#### Cellular Location

Endoplasmic reticulum membrane; Single-pass type IV membrane protein. Mitochondrion membrane; Single-pass type IV membrane protein. Note=Localization to the mitochondrion is regulated by RNF186.

#### Tissue Location

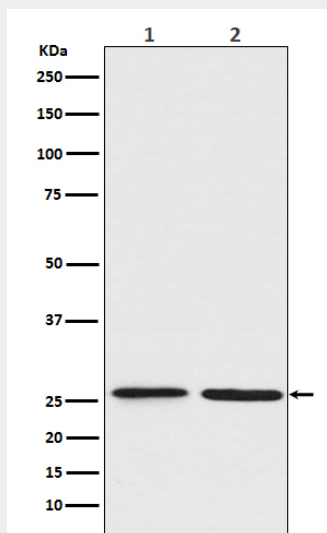
Isoform 1 is highly expressed in heart, brain, liver skeletal muscle and pancreas. Isoform 3 is moderately expressed in placenta, lung and kidney. Isoform 4 is highly expressed in testis and small intestine.

### BNIP1 Antibody - Protocols

Provided below are standard protocols that you may find useful for product applications.

- [Western Blot](#)
- [Blocking Peptides](#)
- [Dot Blot](#)
- [Immunohistochemistry](#)
- [Immunofluorescence](#)
- [Immunoprecipitation](#)
- [Flow Cytometry](#)
- [Cell Culture](#)

### BNIP1 Antibody - Images



Western blot analysis of BNIP1 expression in (1) Jurkat cell lysate; (2) C6 cell lysate.