

BNIP3L Antibody
Rabbit mAb
Catalog # AP91336

Specification

BNIP3L Antibody - Product Information

Application	WB, IHC
Primary Accession	O60238
Reactivity	Rat
Clonality	Monoclonal
Other Names	
Adenovirus E1B19k binding protein B5; BNIP3a; BNIP3H; BNIP3L; BNIP3L protein; NIP3 like protein X; NIP3L; NIX;	
Isotype	Rabbit IgG
Host	Rabbit
Calculated MW	23930 Da

BNIP3L Antibody - Additional Information

Dilution	WB~~1:1000 IHC~~1:100~500
Purification	Affinity-chromatography
Immunogen	A synthesized peptide derived from human BNIP3L
Description	Induces apoptosis. Interacts with viral and cellular anti-apoptosis proteins. Can overcome the suppressors BCL-2 and BCL-XL, although high levels of BCL-XL expression will inhibit apoptosis. May function as a tumor suppressor. Inhibits apoptosis induced by BNIP3.
Storage Condition and Buffer	Rabbit IgG in phosphate buffered saline , pH 7.4, 150mM NaCl, 0.02% sodium azide and 50% glycerol. Store at +4°C short term. Store at -20°C long term. Avoid freeze / thaw cycle.

BNIP3L Antibody - Protein Information

Name BNIP3L

Synonyms BNIP3A, BNIP3H, NIX

Function

Induces apoptosis. Interacts with viral and cellular anti- apoptosis proteins. Can overcome the suppressors BCL-2 and BCL-XL, although high levels of BCL-XL expression will inhibit apoptosis. Inhibits apoptosis induced by BNIP3. Involved in mitochondrial quality control via its interaction with SPATA18/MIEAP: in response to mitochondrial damage, participates in mitochondrial protein

catabolic process (also named MALM) leading to the degradation of damaged proteins inside mitochondria. The physical interaction of SPATA18/MIEAP, BNIP3 and BNIP3L/NIX at the mitochondrial outer membrane regulates the opening of a pore in the mitochondrial double membrane in order to mediate the translocation of lysosomal proteins from the cytoplasm to the mitochondrial matrix. May function as a tumor suppressor.

Cellular Location

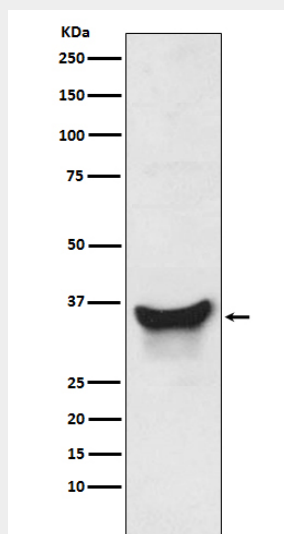
Nucleus envelope. Endoplasmic reticulum. Mitochondrion outer membrane. Membrane; Single-pass membrane protein. Note=Colocalizes with SPATA18 at the mitochondrion outer membrane

BNIP3L Antibody - Protocols

Provided below are standard protocols that you may find useful for product applications.

- [Western Blot](#)
- [Blocking Peptides](#)
- [Dot Blot](#)
- [Immunohistochemistry](#)
- [Immunofluorescence](#)
- [Immunoprecipitation](#)
- [Flow Cytometry](#)
- [Cell Culture](#)

BNIP3L Antibody - Images



Western blot analysis of BNIP3L expression in K562 cell lysate.