

TNF beta Antibody
Rabbit mAb
Catalog # AP91342**Specification**

TNF beta Antibody - Product Information

Application	WB
Primary Accession	P01374
Clonality	Monoclonal
Other Names	
LTalpha; DIF; LT alpha; Lta; Lymphotoxin alpha; TNF B; TNF superfamily member 1; TNF-beta; TNFB; TNFbeta; TNFSF1; TNLG1E;	
Isotype	Rabbit IgG
Host	Rabbit
Calculated MW	22297 Da

TNF beta Antibody - Additional Information

Dilution	WB~~1:1000
Purification	Affinity-chromatography
Immunogen	A synthesized peptide derived from human TNF beta
Description	Cytokine that in its homotrimeric form binds to TNFRSF1A/TNFR1, TNFRSF1B/TNFR and TNFRSF14/HVEM. In its heterotrimeric form with LTB binds to TNFRSF3/LTBR. Lymphotoxin is produced by lymphocytes and cytotoxic for a wide range of tumor cells in vitro and in vivo.
Storage Condition and Buffer	Rabbit IgG in phosphate buffered saline , pH 7.4, 150mM NaCl, 0.02% sodium azide and 50% glycerol. Store at +4°C short term. Store at -20°C long term. Avoid freeze / thaw cycle.

TNF beta Antibody - Protein Information**Name** LTA**Synonyms** TNFB, TNFSF1**Function**

Cytokine that in its homotrimeric form binds to TNFRSF1A/TNFR1, TNFRSF1B/TNFR and TNFRSF14/HVEM (PubMed:9462508). In its heterotrimeric form with LTB binds to TNFRSF3/LTBR (PubMed:24248355). Lymphotoxin is produced by lymphocytes and is cytotoxic for a wide range of tumor cells in vitro and in vivo.

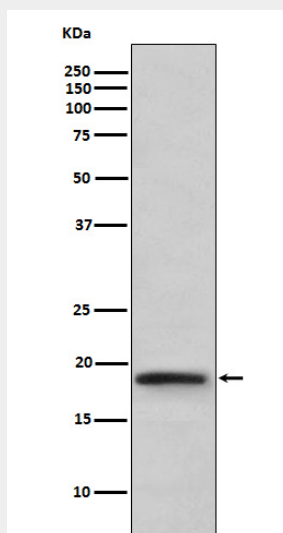
Cellular Location

Secreted. Membrane. Note=The homotrimer is secreted. The heterotrimer is membrane-associated

TNF beta Antibody - Protocols

Provided below are standard protocols that you may find useful for product applications.

- [Western Blot](#)
- [Blocking Peptides](#)
- [Dot Blot](#)
- [Immunohistochemistry](#)
- [Immunofluorescence](#)
- [Immunoprecipitation](#)
- [Flow Cytometry](#)
- [Cell Culture](#)

TNF beta Antibody - Images

Western blot analysis of TNF beta expression in TNF beta recombinant protein.