

WASL Antibody
Rabbit mAb
Catalog # AP91351**Specification****WASL Antibody - Product Information**

Application	WB, IHC, FC, ICC
Primary Accession	O00401
Clonality	Monoclonal
Other Names	
N-WASP; Neural Wiskott Aldrich syndrome protein; NWASP; Wasl; WASPB; Wiskott Aldrich syndrome gene like;	
Isotype	Rabbit IgG
Host	Rabbit
Calculated MW	54827 Da

WASL Antibody - Additional Information

Dilution	WB~~1:1000 IHC~~1:100~500 FC~~1:10~50 ICC~~N/A
Purification	Affinity-chromatography
Immunogen	A synthesized peptide derived from human WASL
Description	Regulates actin polymerization by stimulating the actin-nucleating activity of the Arp2/3 complex. Binds to HSF1/HSTF1 and forms a complex on heat shock promoter elements (HSE) that negatively regulates HSP90 expression.
Storage Condition and Buffer	Rabbit IgG in phosphate buffered saline , pH 7.4, 150mM NaCl, 0.02% sodium azide and 50% glycerol. Store at +4°C short term. Store at -20°C long term. Avoid freeze / thaw cycle.

WASL Antibody - Protein Information**Name WASL****Function**

Regulates actin polymerization by stimulating the actin- nucleating activity of the Arp2/3 complex (PubMed:16767080, PubMed:19366662, PubMed:19487689, PubMed:22847007, PubMed:22921828,

PubMed:9422512). Involved in various processes, such as mitosis and cytokinesis, via its role in the regulation of actin polymerization (PubMed:19366662, PubMed:19487689, PubMed:22847007, PubMed:22921828, PubMed:9422512). Together with CDC42, involved in the extension and maintenance of the formation of thin, actin-rich surface projections called filopodia (PubMed:9422512). In addition to its role in the cytoplasm, also plays a role in the nucleus by regulating gene transcription, probably by promoting nuclear actin polymerization (PubMed:16767080). Binds to HSF1/HSTF1 and forms a complex on heat shock promoter elements (HSE) that negatively regulates HSP90 expression (By similarity). Plays a role in dendrite spine morphogenesis (By similarity). Decreasing levels of DNMBP (using antisense RNA) alters apical junction morphology in cultured enterocytes, junctions curve instead of being nearly linear (PubMed:19767742).

Cellular Location

Cytoplasm, cytoskeleton. Nucleus Cytoplasm {ECO:0000250|UniProtKB:Q91YD9}.

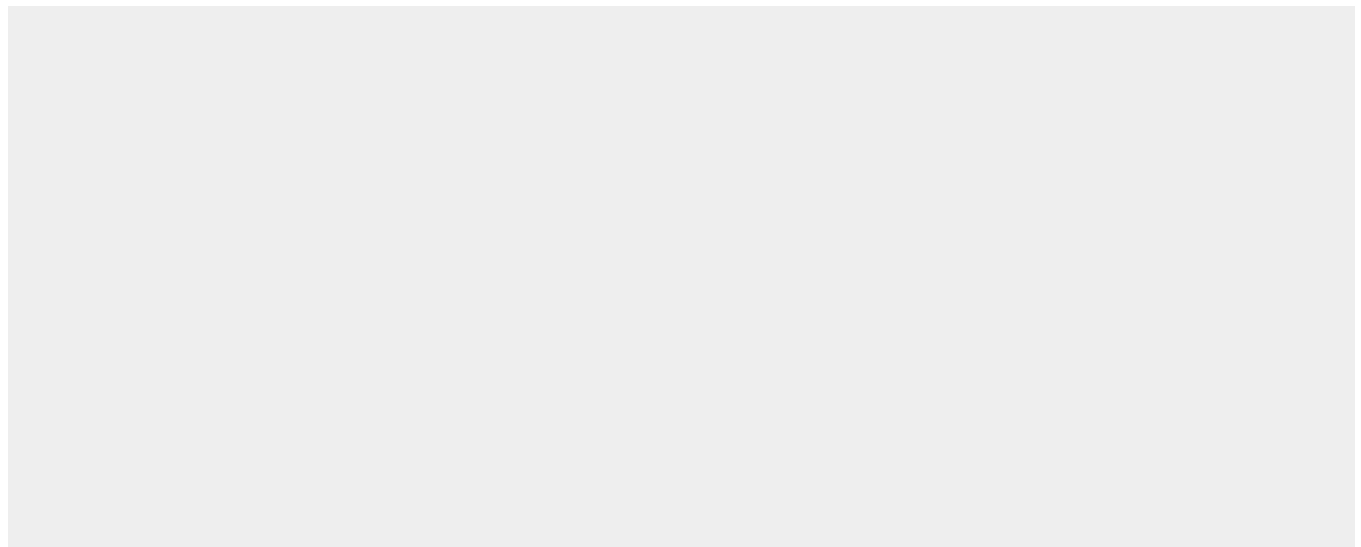
Note=Preferentially localized in the cytoplasm when phosphorylated and in the nucleus when unphosphorylated (By similarity). Exported from the nucleus by an nuclear export signal (NES)-dependent mechanism to the cytoplasm (By similarity). {ECO:0000250|UniProtKB:Q91YD9}

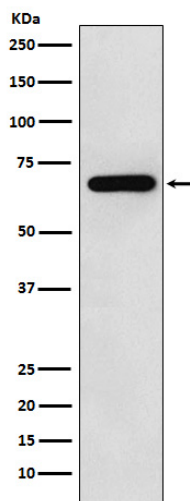
WASL Antibody - Protocols

Provided below are standard protocols that you may find useful for product applications.

- [Western Blot](#)
- [Blocking Peptides](#)
- [Dot Blot](#)
- [Immunohistochemistry](#)
- [Immunofluorescence](#)
- [Immunoprecipitation](#)
- [Flow Cytometry](#)
- [Cell Culture](#)

WASL Antibody - Images





Western blot analysis of WASL expression in HeLa cell lysate.