

PTGER2 Antibody
Rabbit mAb
Catalog # AP91352**Specification**

PTGER2 Antibody - Product Information

Application	WB, IHC, FC, ICC
Primary Accession	P43116
Reactivity	Rat
Clonality	Monoclonal

Other Names

EP2; PGE2 receptor EP2 subtype; Prostaglandin E receptor 2 subtype EP2 53kDa; Prostaglandin E2 receptor EP2 subtype; Prostanoid EP2 receptor; Ptger2;

Isotype	Rabbit IgG
Host	Rabbit
Calculated MW	39761 Da

PTGER2 Antibody - Additional Information

Dilution	WB~~1:1000 IHC~~1:100~500 FC~~1:10~50 ICC~~N/A
Purification	Affinity-chromatography
Immunogen	A synthesized peptide derived from human PTGER2
Description	Receptor for prostaglandin E2 (PGE2). The activity of this receptor is mediated by G(s) proteins that stimulate adenylate cyclase. The subsequent raise in intracellular cAMP is responsible for the relaxing effect of this receptor on smooth muscle.
Storage Condition and Buffer	Rabbit IgG in phosphate buffered saline , pH 7.4, 150mM NaCl, 0.02% sodium azide and 50% glycerol. Store at +4°C short term. Store at -20°C long term. Avoid freeze / thaw cycle.

PTGER2 Antibody - Protein Information**Name** PTGER2**Function**

Receptor for prostaglandin E2 (PGE2). The activity of this receptor is mediated by G(s) proteins that stimulate adenylate cyclase. The subsequent raise in intracellular cAMP is responsible for the relaxing effect of this receptor on smooth muscle.

Cellular Location

Cell membrane; Multi-pass membrane protein.

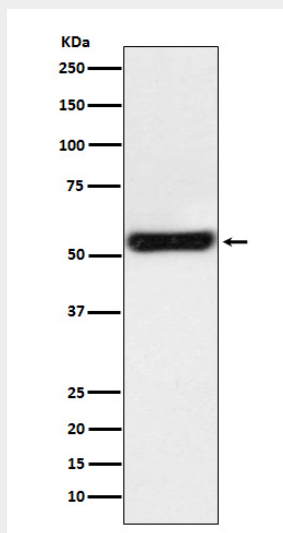
Tissue Location

Placenta and lung.

PTGER2 Antibody - Protocols

Provided below are standard protocols that you may find useful for product applications.

- [Western Blot](#)
- [Blocking Peptides](#)
- [Dot Blot](#)
- [Immunohistochemistry](#)
- [Immunofluorescence](#)
- [Immunoprecipitation](#)
- [Flow Cytometry](#)
- [Cell Culture](#)

PTGER2 Antibody - Images

Western blot analysis of PTGER2 expression in JAR cell lysate.