

FRS2 Antibody
Rabbit mAb
Catalog # AP91357

Specification

FRS2 Antibody - Product Information

Application	WB, FC, IP
Primary Accession	Q8WU20
Clonality	Monoclonal
Other Names	
FGFR signaling adaptor SNT; FGFR substrate 2; FRS2; FRS2A; FRS2 alpha; SNT; SNT1; Suc 1;	
Isotype	Rabbit IgG
Host	Rabbit
Calculated MW	57029 Da

FRS2 Antibody - Additional Information

Purification	Affinity-chromatography
Immunogen	A synthesized peptide derived from human FRS2
Description	Adapter protein that links FGR and NGF receptors to downstream signaling pathways. Involved in the activation of MAP kinases. Modulates signaling via SHC1 by competing for a common binding site on NTRK1.
Storage Condition and Buffer	Rabbit IgG in phosphate buffered saline , pH 7.4, 150mM NaCl, 0.02% sodium azide and 50% glycerol. Store at +4°C short term. Store at -20°C long term. Avoid freeze / thaw cycle.

FRS2 Antibody - Protein Information

Name FRS2

Function

Adapter protein that links activated FGR and NGF receptors to downstream signaling pathways. Plays an important role in the activation of MAP kinases and in the phosphorylation of PIK3R1, the regulatory subunit of phosphatidylinositol 3-kinase, in response to ligand-mediated activation of FGFR1. Modulates signaling via SHC1 by competing for a common binding site on NTRK1.

Cellular Location

Endomembrane system. Note=Cytoplasmic, membrane- bound

Tissue Location

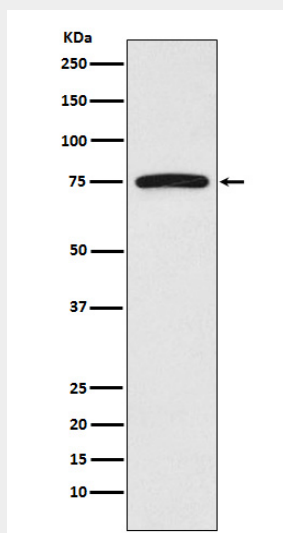
Highly expressed in heart, brain, spleen, lung, liver, skeletal muscle, kidney and testis

FRS2 Antibody - Protocols

Provided below are standard protocols that you may find useful for product applications.

- [Western Blot](#)
- [Blocking Peptides](#)
- [Dot Blot](#)
- [Immunohistochemistry](#)
- [Immunofluorescence](#)
- [Immunoprecipitation](#)
- [Flow Cytometry](#)
- [Cell Culture](#)

FRS2 Antibody - Images



Western blot analysis of FRS2 expression in HeLa cell lysate.