

NRCAM Antibody
Rabbit mAb
Catalog # AP91358**Specification**

NRCAM Antibody - Product Information

Application	WB, IP
Primary Accession	<u>O92823</u>
Clonality	Monoclonal
Other Names	
Bravo; hBravo; Neuronal cell adhesion molecule; Ng CAM related; NgCAM related cell adhesion molecule; Nr CAM; Nrcam;	
Isotype	Rabbit IgG
Host	Rabbit
Calculated MW	143890 Da

NRCAM Antibody - Additional Information

Dilution	WB~~1:1000 IP~~N/A
Purification	Affinity-chromatography
Immunogen	A synthesized peptide derived from human NRCAM
Description	Cell adhesion, ankyrin-binding protein involved in neuron-neuron adhesion. May play a role in the molecular assembly of the nodes of Ranvier.
Storage Condition and Buffer	Rabbit IgG in phosphate buffered saline , pH 7.4, 150mM NaCl, 0.02% sodium azide and 50% glycerol. Store at +4°C short term. Store at -20°C long term. Avoid freeze / thaw cycle.

NRCAM Antibody - Protein Information**Name** NRCAM**Synonyms** KIAA0343**Function**

Cell adhesion protein that is required for normal responses to cell-cell contacts in brain and in the peripheral nervous system. Plays a role in neurite outgrowth in response to contactin binding. Plays a role in mediating cell-cell contacts between Schwann cells and axons. Plays a role in the formation and maintenance of the nodes of Ranvier on myelinated axons. Nodes of Ranvier contain clustered sodium channels that are crucial for the saltatory propagation of action potentials along myelinated axons. During development, nodes of Ranvier are formed by the fusion of two heminodes. Required for normal clustering of sodium channels at heminodes; not required for the formation of mature nodes with normal sodium channel clusters. Required,

together with GLDN, for maintaining NFASC and sodium channel clusters at mature nodes of Ranvier.

Cellular Location

Cell membrane {ECO:0000250|UniProtKB:Q810U4}; Single-pass type I membrane protein {ECO:0000250|UniProtKB:Q810U4} Cell projection, axon {ECO:0000250|UniProtKB:Q810U4}. Secreted {ECO:0000250|UniProtKB:Q810U4}. Note=Detected at nodes of Ranvier {ECO:0000250|UniProtKB:Q810U4}

Tissue Location

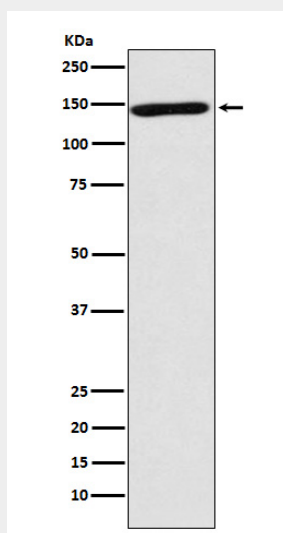
Detected in all the examined tissues. In the brain it was detected in the amygdala, caudate nucleus, corpus callosum, hippocampus, hypothalamus, substantia nigra, subthalamic nucleus and thalamus.

NRCAM Antibody - Protocols

Provided below are standard protocols that you may find useful for product applications.

- [Western Blot](#)
- [Blocking Peptides](#)
- [Dot Blot](#)
- [Immunohistochemistry](#)
- [Immunofluorescence](#)
- [Immunoprecipitation](#)
- [Flow Cytometry](#)
- [Cell Culture](#)

NRCAM Antibody - Images



Western blot analysis of NRCAM expression in human forebrain lysate.