

TBPL1 Antibody
Rabbit mAb
Catalog # AP91359**Specification**

TBPL1 Antibody - Product Information

Application	WB, IHC, FC, ICC, IP
Primary Accession	P62380
Reactivity	Rat
Clonality	Monoclonal
Other Names	
21 kDa TBP-like protein; Second TBP of unique DNA protein; STUD; TATA box-binding protein-related factor 2; TBPL1; TLF; TLP; TLP21;	
Isotype	Rabbit IgG
Host	Rabbit
Calculated MW	20887 Da

TBPL1 Antibody - Additional Information

Dilution	WB~~1:1000 IHC~~1:100~500 FC~~1:10~50 ICC~~N/A IP~~N/A
Purification	Affinity-chromatography
Immunogen	A synthesized peptide derived from human TBPL1
Description	Does not bind the TATA box. Has DNA-binding ability.
Storage Condition and Buffer	Rabbit IgG in phosphate buffered saline , pH 7.4, 150mM NaCl, 0.02% sodium azide and 50% glycerol. Store at +4°C short term. Store at -20°C long term. Avoid freeze / thaw cycle.

TBPL1 Antibody - Protein Information**Name** TBPL1**Synonyms** TLF, TLP, TLP21, TRF2, TRP**Function**

Part of a specialized transcription system that mediates the transcription of most ribosomal proteins through the 5'-TCT-3' motif which is a core promoter element at these genes. Seems to also mediate the transcription of NF1. Does not bind the TATA box.

Cellular Location

Cytoplasm. Nucleus.

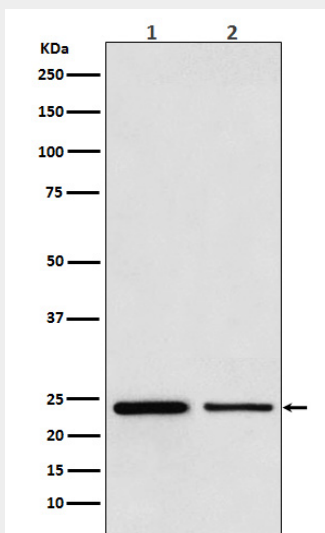
Tissue Location

Ubiquitously expressed, with highest levels in the testis and ovary.

TBPL1 Antibody - Protocols

Provided below are standard protocols that you may find useful for product applications.

- [Western Blot](#)
- [Blocking Peptides](#)
- [Dot Blot](#)
- [Immunohistochemistry](#)
- [Immunofluorescence](#)
- [Immunoprecipitation](#)
- [Flow Cytometry](#)
- [Cell Culture](#)

TBPL1 Antibody - Images

Western blot analysis of TBPL1 expression in (1) HeLa cell lysate; (2) Mouse testis lysate.