

**GCN2 Antibody**  
**Rabbit mAb**  
**Catalog # AP91362****Specification****GCN2 Antibody - Product Information**

Application	WB, IHC, FC, ICC
Primary Accession	<a href="#">Q9P2K8</a>
Clonality	Monoclonal
<b>Other Names</b>	
Eif2ak4; Eukaryotic Translation Initiation Factor 2 alpha kinase 4; GCN2; GCN2 eIF2alpha kinase; GCN2 like protein; MGCN2;	
Isotype	Rabbit IgG
Host	Rabbit
Calculated MW	186911 Da

**GCN2 Antibody - Additional Information**

Dilution	WB~~1:1000 IHC~~1:100~500 FC~~1:10~50 ICC~~N/A
Purification	Affinity-chromatography
Immunogen	A synthesized peptide derived from human GCN2
Description	Can phosphorylate the alpha subunit of EIF2 and may mediate translational control.
Storage Condition and Buffer	Rabbit IgG in phosphate buffered saline , pH 7.4, 150mM NaCl, 0.02% sodium azide and 50% glycerol. Store at +4°C short term. Store at -20°C long term. Avoid freeze / thaw cycle.

**GCN2 Antibody - Protein Information****Name** EIF2AK4 ([HGNC:19687](#))**Synonyms** GCN2, KIAA1338**Function**

Metabolic-stress sensing protein kinase that phosphorylates the alpha subunit of eukaryotic translation initiation factor 2 (EIF2S1/eIF-2-alpha) in response to low amino acid availability (PubMed:<a href="http://www.uniprot.org/citations/25329545" target="\_blank">25329545</a>, PubMed:<a href="http://www.uniprot.org/citations/32610081" target="\_blank">32610081</a>). Plays a role as an activator of the integrated stress response (ISR) required for adaptation to amino acid starvation (By similarity). EIF2S1/eIF-2-alpha phosphorylation in response to stress converts EIF2S1/eIF-2-alpha into a global protein synthesis inhibitor, leading to a global

attenuation of cap-dependent translation, and thus to a reduced overall utilization of amino acids, while concomitantly initiating the preferential translation of ISR- specific mRNAs, such as the transcriptional activator ATF4, and hence allowing ATF4-mediated reprogramming of amino acid biosynthetic gene expression to alleviate nutrient depletion (PubMed:<a href="http://www.uniprot.org/citations/32610081" target="\_blank">32610081</a>). Binds uncharged tRNAs (By similarity). Required for the translational induction of protein kinase PRKCH following amino acid starvation (By similarity). Involved in cell cycle arrest by promoting cyclin D1 mRNA translation repression after the unfolded protein response pathway (UPR) activation or cell cycle inhibitor CDKN1A/p21 mRNA translation activation in response to amino acid deprivation (PubMed:<a href="http://www.uniprot.org/citations/26102367" target="\_blank">26102367</a>). Plays a role in the consolidation of synaptic plasticity, learning as well as formation of long-term memory (By similarity). Plays a role in neurite outgrowth inhibition (By similarity). Plays a proapoptotic role in response to glucose deprivation (By similarity). Promotes global cellular protein synthesis repression in response to UV irradiation independently of the stress-activated protein kinase/c-Jun N-terminal kinase (SAPK/JNK) and p38 MAPK signaling pathways (By similarity). Plays a role in the antiviral response against alphavirus infection; impairs early viral mRNA translation of the incoming genomic virus RNA, thus preventing alphavirus replication (By similarity).

**Cellular Location**

Cytoplasm {ECO:0000250|UniProtKB:Q9QZ05}.

**Tissue Location**

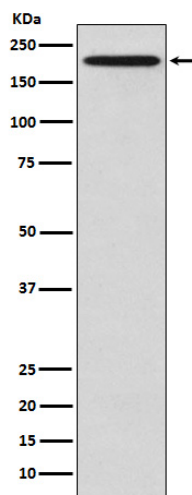
Widely expressed (PubMed:10504407). Expressed in lung, smooth muscle cells and macrophages (PubMed:24292273)

**GCN2 Antibody - Protocols**

Provided below are standard protocols that you may find useful for product applications.

- [Western Blot](#)
- [Blocking Peptides](#)
- [Dot Blot](#)
- [Immunohistochemistry](#)
- [Immunofluorescence](#)
- [Immunoprecipitation](#)
- [Flow Cytometry](#)
- [Cell Culture](#)

**GCN2 Antibody - Images**



Western blot analysis of GCN2 expression in HeLa cell lysate.