

Staufen Antibody
Rabbit mAb
Catalog # AP91364**Specification**

Staufen Antibody - Product Information

Application	WB, FC, ICC
Primary Accession	<u>O95793</u>
Reactivity	Rat
Clonality	Monoclonal

Other Names

Double-stranded RNA-binding protein Staufen homolog 1; PPP1R150; STAU; staufen; Staufen RNA binding protein (Drosophila); Staufen, Drosophila, homolog of, 1;

Isotype	Rabbit IgG
Host	Rabbit
Calculated MW	63182 Da

Staufen Antibody - Additional Information

Dilution	WB~~1:1000 FC~~1:10~50 ICC~~N/A
Purification	Affinity-chromatography
Immunogen	A synthesized peptide derived from human Staufen
Description	Binds double-stranded RNA (regardless of the sequence) and tubulin. May play a role in specific positioning of mRNAs at given sites in the cell by cross-linking cytoskeletal and RNA components, and in stimulating their translation at the site.
Storage Condition and Buffer	Rabbit IgG in phosphate buffered saline , pH 7.4, 150mM NaCl, 0.02% sodium azide and 50% glycerol. Store at +4°C short term. Store at -20°C long term. Avoid freeze / thaw cycle.

Staufen Antibody - Protein Information**Name** STAU1**Synonyms** STAU**Function**

Binds double-stranded RNA (regardless of the sequence) and tubulin. May play a role in specific positioning of mRNAs at given sites in the cell by cross-linking cytoskeletal and RNA components, and in stimulating their translation at the site.

Cellular Location

Cytoplasm. Rough endoplasmic reticulum. Note=Localizes exclusively with the rough endoplasmic reticulum (RER)

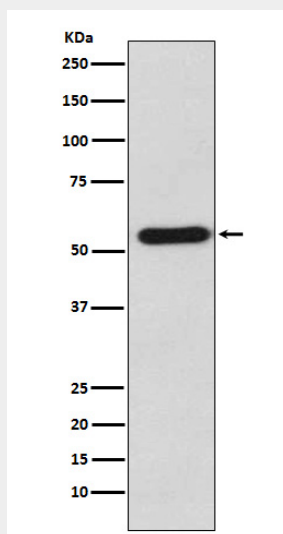
Tissue Location

Widely expressed. Expressed in brain, pancreas, heart, skeletal muscles, liver, lung, kidney and placenta

Staufen Antibody - Protocols

Provided below are standard protocols that you may find useful for product applications.

- [Western Blot](#)
- [Blocking Peptides](#)
- [Dot Blot](#)
- [Immunohistochemistry](#)
- [Immunofluorescence](#)
- [Immunoprecipitation](#)
- [Flow Cytometry](#)
- [Cell Culture](#)

Staufen Antibody - Images

Western blot analysis of Staufen expression in K562 cell lysate.