

**PDCD4 Antibody**  
**Rabbit mAb**  
**Catalog # AP91366****Specification**

---

**PDCD4 Antibody - Product Information**

Application	WB, IHC, FC, ICC
Primary Accession	<a href="#">Q53EL6</a>
Clonality	Monoclonal
<b>Other Names</b>	
Death up-regulated gene protein; Dug; H731; Ma3; Neoplastic transformation inhibitor; Nuclear antigen H731; Pdcd4; Programmed cell death protein 4; Tis;	
Isotype	Rabbit IgG
Host	Rabbit
Calculated MW	51735 Da

**PDCD4 Antibody - Additional Information**

Dilution	WB~~1:1000 IHC~~1:100~500 FC~~1:10~50 ICC~~N/A
Purification	Affinity-chromatography
Immunogen	A synthesized peptide derived from human PDCD4
Description	PDCD4 (programmed cell death protein 4) was identified as a suppressor of neoplastic transformation. It interacts with eukaryotic initiation factors eIF4A1 and eIF4A2. PDCD4 colocalizes with eIF4A in the cytoplasm and inhibits the activity of eIF4A as an ATP-dependent RNA helicase. Rabbit IgG in phosphate buffered saline , pH 7.4, 150mM NaCl, 0.02% sodium azide and 50% glycerol. Store at +4°C short term. Store at -20°C long term. Avoid freeze / thaw cycle.
Storage Condition and Buffer	

**PDCD4 Antibody - Protein Information****Name** PDCD4**Synonyms** H731**Function**

Inhibits translation initiation and cap-dependent translation. May exert its function by hindering the interaction between EIF4A1 and EIF4G. Inhibits the helicase activity of EIF4A. Modulates the activation of JUN kinase. Down-regulates the expression of MAP4K1, thus inhibiting events

important in driving invasion, namely, MAPK85 activation and consequent JUN-dependent transcription. May play a role in apoptosis. Tumor suppressor. Inhibits tumor promoter-induced neoplastic transformation. Binds RNA (By similarity).

#### Cellular Location

Nucleus {ECO:0000250|UniProtKB:Q61823}. Cytoplasm {ECO:0000250|UniProtKB:Q61823}. Note=Shuttles between the nucleus and cytoplasm (By similarity). Predominantly nuclear under normal growth conditions, and when phosphorylated at Ser-457 (PubMed:16357133)

#### Tissue Location

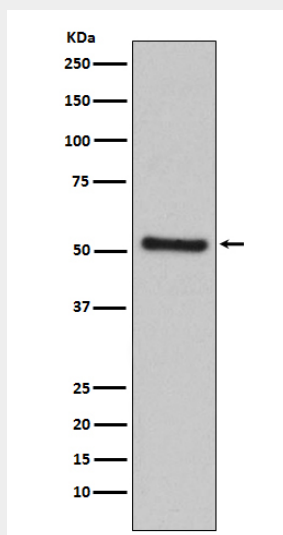
Up-regulated in proliferative cells. Highly expressed in epithelial cells of the mammary gland. Reduced expression in lung cancer and colon carcinoma.

### PDCD4 Antibody - Protocols

Provided below are standard protocols that you may find useful for product applications.

- [Western Blot](#)
- [Blocking Peptides](#)
- [Dot Blot](#)
- [Immunohistochemistry](#)
- [Immunofluorescence](#)
- [Immunoprecipitation](#)
- [Flow Cytometry](#)
- [Cell Culture](#)

### PDCD4 Antibody - Images



Western blot analysis of PDCD4 expression in HeLa cell lysate.