

PON1 Antibody
Rabbit mAb
Catalog # AP91368**Specification**

PON1 Antibody - Product Information

Application	WB, IP
Primary Accession	P27169
Reactivity	Rat
Clonality	Monoclonal
Other Names	
A esterase 1; Aromatic esterase 1; Arylesterase 1; Arylesterase B type; ESA; Esterase A; K-45; MVCD5; Paraoxonase 1; Paraoxonase B type; PON; PON1; Serum aryldiacylphosphatase;	
Isotype	Rabbit IgG
Host	Rabbit
Calculated MW	39731 Da

PON1 Antibody - Additional Information

Dilution	WB~~1:1000 IP~~N/A
Purification	Affinity-chromatography
Immunogen	A synthesized peptide derived from human PON1
Description	Hydrolyzes the toxic metabolites of a variety of organophosphorus insecticides. Capable of hydrolyzing a broad spectrum of organophosphate substrates and lactones, and a number of aromatic carboxylic acid esters. Mediates an enzymatic protection of low density lipoproteins against oxidative modification and the consequent series of events leading to atheroma formation.
Storage Condition and Buffer	Rabbit IgG in phosphate buffered saline , pH 7.4, 150mM NaCl, 0.02% sodium azide and 50% glycerol. Store at +4°C short term. Store at -20°C long term. Avoid freeze / thaw cycle.

PON1 Antibody - Protein Information**Name** PON1**Synonyms** PON**Function**

Hydrolyzes the toxic metabolites of a variety of organophosphorus insecticides. Capable of

hydrolyzing a broad spectrum of organophosphate substrates and lactones, and a number of aromatic carboxylic acid esters. Mediates an enzymatic protection of low density lipoproteins against oxidative modification and the consequent series of events leading to atheroma formation.

Cellular Location

Secreted, extracellular space.

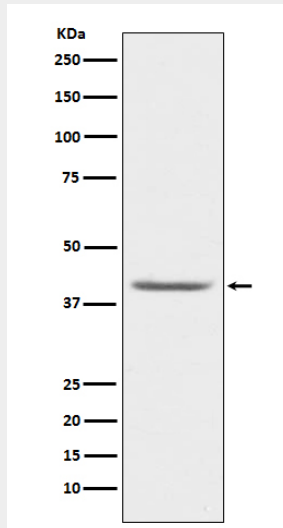
Tissue Location

Plasma, associated with HDL (at protein level). Expressed in liver, but not in heart, brain, placenta, lung, skeletal muscle, kidney or pancreas.

PON1 Antibody - Protocols

Provided below are standard protocols that you may find useful for product applications.

- [Western Blot](#)
- [Blocking Peptides](#)
- [Dot Blot](#)
- [Immunohistochemistry](#)
- [Immunofluorescence](#)
- [Immunoprecipitation](#)
- [Flow Cytometry](#)
- [Cell Culture](#)

PON1 Antibody - Images

Western blot analysis of PON1 expression in human plasma lysate.