

MBD1 Antibody
Rabbit mAb
Catalog # AP91371

Specification

MBD1 Antibody - Product Information

Application **WB, IHC, ICC, IP**
Primary Accession **[Q9UIS9](#)**
Clonality **Monoclonal**
Other Names
CXXC 3; Mbd1; MECP1 COMPLEX; PCM1; RFT;

Isotype **Rabbit IgG**
Host **Rabbit**
Calculated MW **66607 Da**

MBD1 Antibody - Additional Information

Dilution **WB~~1:1000**
IHC~~1:100~500
ICC~~N/A
IP~~N/A
Purification **Affinity-chromatography**
Immunogen **A synthesized peptide derived from human MBD1**
Description **Transcriptional repressor that binds CpG islands in promoters where the DNA is methylated at position 5 of cytosine within CpG dinucleotides. Binding is abolished by the presence of 7-mG that is produced by DNA damage by methylmethanesulfonate (MMS).**
Storage Condition and Buffer **Rabbit IgG in phosphate buffered saline , pH 7.4, 150mM NaCl, 0.02% sodium azide and 50% glycerol. Store at +4°C short term. Store at -20°C long term. Avoid freeze / thaw cycle.**

MBD1 Antibody - Protein Information

Name MBD1 ([HGNC:6916](#))

Synonyms CXXC3, PCM1

Function

Transcriptional repressor that binds CpG islands in promoters where the DNA is methylated at position 5 of cytosine within CpG dinucleotides. Binding is abolished by the presence of 7-mG that is produced by DNA damage by methylmethanesulfonate (MMS). Acts as transcriptional repressor and plays a role in gene silencing by recruiting ATF7IP, which in turn recruits factors such as the

histone methyltransferase SETDB1. Probably forms a complex with SETDB1 and ATF7IP that represses transcription and couples DNA methylation and histone 'Lys-9' trimethylation. Isoform 1 and isoform 2 can also repress transcription from unmethylated promoters.

Cellular Location

Nucleus. Nucleus matrix. Nucleus speckle Chromosome Note=Nuclear, in a punctate pattern (PubMed:12711603). Associated with euchromatic regions of the chromosomes, with pericentromeric regions on chromosome 1 and with telomeric regions from several chromosomes (PubMed:10454587, PubMed:10648624).

Tissue Location

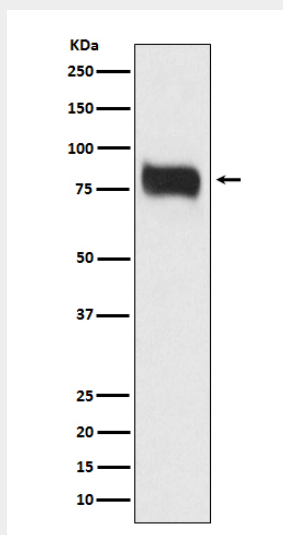
Widely expressed..

MBD1 Antibody - Protocols

Provided below are standard protocols that you may find useful for product applications.

- [Western Blot](#)
- [Blocking Peptides](#)
- [Dot Blot](#)
- [Immunohistochemistry](#)
- [Immunofluorescence](#)
- [Immunoprecipitation](#)
- [Flow Cytometry](#)
- [Cell Culture](#)

MBD1 Antibody - Images



Western blot analysis of MBD1 expression in HeLa cell lysate.