

Bag3 Antibody
Rabbit mAb
Catalog # AP91373**Specification****Bag3 Antibody - Product Information**

| | |
|---|------------------------|
| Application | WB, IHC, IP |
| Primary Accession | O95817 |
| Clonality | Monoclonal |
| Other Names | |
| BAG 3; BAG family molecular chaperone regulator 3; Bag3; Bcl 2 binding protein; Bcl-2-binding protein Bis; BIS; CAIR 1; Docking protein CAIR 1; MFM6; | |
| Isotype | Rabbit IgG |
| Host | Rabbit |
| Calculated MW | 61595 Da |

Bag3 Antibody - Additional Information

| | |
|------------------------------|---|
| Dilution | WB~~1:1000 IHC~~1:100~500 IP~~N/A |
| Purification | Affinity-chromatography |
| Immunogen | A synthesized peptide derived from human Bag3 |
| Description | Inhibits the chaperone activity of HSP70/HSC70 by promoting substrate release. Has anti-apoptotic activity. |
| Storage Condition and Buffer | Rabbit IgG in phosphate buffered saline , pH 7.4, 150mM NaCl, 0.02% sodium azide and 50% glycerol. Store at +4°C short term. Store at -20°C long term. Avoid freeze / thaw cycle. |

Bag3 Antibody - Protein Information**Name** BAG3**Synonyms** BIS**Function**

Co-chaperone and adapter protein that connects different classes of molecular chaperones including heat shock proteins 70 (HSP70s), e.g. HSPA1A/HSP70 or HSPA8/HSC70, and small heat shock proteins (sHSPs), e.g. HSPB8 (PubMed:27884606, PubMed:30559338). Acts as a nucleotide-exchange factor (NEF) promoting the release of ADP from HSP70s, thereby triggering client protein release (PubMed:27884606, PubMed:30559338). Nucleotide

release is mediated via BAG3 binding to the nucleotide-binding domain (NBD) of HSP70s, whereas client release is mediated via binding to the substrate-binding domain (SBD) (PubMed:27474739, PubMed:9873016). Has anti-apoptotic activity (PubMed:10597216). Plays a role in the HSF1 nucleocytoplasmic transport (PubMed:26159920).

Cellular Location

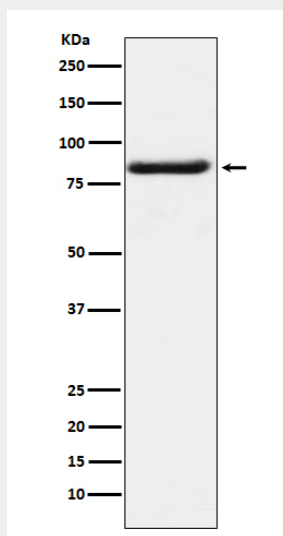
Nucleus. Cytoplasm. Note=Colocalizes with HSF1 to the nucleus upon heat stress (PubMed:26159920)

Bag3 Antibody - Protocols

Provided below are standard protocols that you may find useful for product applications.

- [Western Blot](#)
- [Blocking Peptides](#)
- [Dot Blot](#)
- [Immunohistochemistry](#)
- [Immunofluorescence](#)
- [Immunoprecipitation](#)
- [Flow Cytometry](#)
- [Cell Culture](#)

Bag3 Antibody - Images



Western blot analysis of Bag3 expression in K562 cell lysate.