

**Menin Antibody**  
**Rabbit mAb**  
**Catalog # AP91375**

## Specification

---

### Menin Antibody - Product Information

Application	WB, IHC, ICC, IP
Primary Accession	<a href="#">O00255</a>
Clonality	Monoclonal
<b>Other Names</b>	
MEA1; Men1; Menin; Multiple Endocrine Adenomatosis 1; Multiple Endocrine Neoplasia 1; SCG2; Suppressor Candidate Gene 2; Wermer syndrome; ZES;	
Isotype	Rabbit IgG
Host	Rabbit
Calculated MW	68023 Da

### Menin Antibody - Additional Information

Dilution	WB~~1:1000 IHC~~1:100~500 ICC~~N/A IP~~N/A
Purification	Affinity-chromatography
Immunogen	A synthesized peptide derived from human Menin
Description	Menin, the protein product of the MEN1 gene, is a component of the mixed-lineage leukemia protein (MLL)-containing histone methyltransferase complex that facilitates methylation of histone H3 Lys4 to promote transcriptional activation. Menin functions to suppress proliferation of pancreatic islet cells, at least in part through MLL-mediated activation of the p18INK4c (p18) and p27CIP/KIP (p27) cyclin-dependent kinase inhibitor genes.
Storage Condition and Buffer	Rabbit IgG in phosphate buffered saline , pH 7.4, 150mM NaCl, 0.02% sodium azide and 50% glycerol. Store at +4°C short term. Store at -20°C long term. Avoid freeze / thaw cycle.

### Menin Antibody - Protein Information

**Name** MEN1

**Synonyms** SCG2

**Function**

Essential component of a MLL/SET1 histone methyltransferase (HMT) complex, a complex that specifically methylates 'Lys-4' of histone H3 (H3K4). Functions as a transcriptional regulator. Binds to the TERT promoter and represses telomerase expression. Plays a role in TGFB1-mediated inhibition of cell-proliferation, possibly regulating SMAD3 transcriptional activity. Represses JUND-mediated transcriptional activation on AP1 sites, as well as that mediated by NFkB subunit RELA. Positively regulates HOXC8 and HOXC6 gene expression. May be involved in normal hematopoiesis through the activation of HOXA9 expression (By similarity). May be involved in DNA repair.

**Cellular Location**

Nucleus. Note=Concentrated in nuclear body-like structures. Relocates to the nuclear matrix upon gamma irradiation

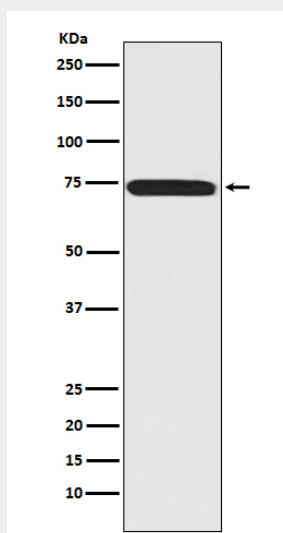
**Tissue Location**

Ubiquitous.

**Menin Antibody - Protocols**

Provided below are standard protocols that you may find useful for product applications.

- [Western Blot](#)
- [Blocking Peptides](#)
- [Dot Blot](#)
- [Immunohistochemistry](#)
- [Immunofluorescence](#)
- [Immunoprecipitation](#)
- [Flow Cytometry](#)
- [Cell Culture](#)

**Menin Antibody - Images**

Western blot analysis of Menin expression in 293T cell lysate.