

**DHFR Antibody**  
**Rabbit mAb**  
**Catalog # AP91383****Specification**

---

**DHFR Antibody - Product Information**

Application	WB, IHC, ICC
Primary Accession	<a href="#">P00374</a>
Reactivity	Rat
Clonality	Monoclonal
<b>Other Names</b>	
DHFR; DHFRP1; Dihydrofolate reductase; DYR;	
Isotype	Rabbit IgG
Host	Rabbit
Calculated MW	21453 Da

**DHFR Antibody - Additional Information**

Dilution	WB~~1:1000 IHC~~1:100~500 ICC~~N/A
Purification	Affinity-chromatography
Immunogen	A synthesized peptide derived from human DHFR
Description	Key enzyme in folate metabolism. Catalyzes an essential reaction for de novo glycine and purine synthesis, and for DNA precursor synthesis.
Storage Condition and Buffer	Rabbit IgG in phosphate buffered saline , pH 7.4, 150mM NaCl, 0.02% sodium azide and 50% glycerol. Store at +4°C short term. Store at -20°C long term. Avoid freeze / thaw cycle.

**DHFR Antibody - Protein Information****Name** DHFR**Function**

Key enzyme in folate metabolism. Contributes to the de novo mitochondrial thymidylate biosynthesis pathway. Catalyzes an essential reaction for de novo glycine and purine synthesis, and for DNA precursor synthesis. Binds its own mRNA and that of DHFR2.

**Cellular Location**

Mitochondrion {ECO:0000250|UniProtKB:P00375}. Cytoplasm {ECO:0000250|UniProtKB:P00375}

**Tissue Location**

Widely expressed in fetal and adult tissues, including throughout the fetal and adult brains and

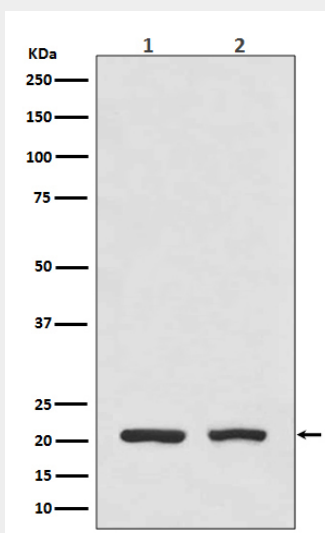
whole blood Expression is higher in the adult brain than in the fetal brain

### **DHFR Antibody - Protocols**

Provided below are standard protocols that you may find useful for product applications.

- [Western Blot](#)
- [Blocking Peptides](#)
- [Dot Blot](#)
- [Immunohistochemistry](#)
- [Immunofluorescence](#)
- [Immunoprecipitation](#)
- [Flow Cytometry](#)
- [Cell Culture](#)

### **DHFR Antibody - Images**



Western blot analysis of DHFR expression in (1) HeLa cell lysate; (2) Mouse spleen lysate.