

DAZL Antibody
Rabbit mAb
Catalog # AP91384**Specification**

DAZL Antibody - Product Information

Application	WB
Primary Accession	O92904
Clonality	Monoclonal
Other Names	
DAZ homolog; DAZ like autosomal; DAZH; DAZL; DAZL1; DAZLA; Deleted in azoospermia like 1; Germline specific RNA binding protein; SPGY like autosomal; SPGYLA; Tpx2;	
Isotype	Rabbit IgG
Host	Rabbit
Calculated MW	33178 Da

DAZL Antibody - Additional Information

Purification	Affinity-chromatography
Immunogen	A synthesized peptide derived from human DAZL
Description	RNA-binding protein, which is essential for gametogenesis. Plays a central role during spermatogenesis. May act by binding to the 3'-UTR of mRNA and thereby regulating the translation of key transcripts.
Storage Condition and Buffer	Rabbit IgG in phosphate buffered saline , pH 7.4, 150mM NaCl, 0.02% sodium azide and 50% glycerol. Store at +4°C short term. Store at -20°C long term. Avoid freeze / thaw cycle.

DAZL Antibody - Protein Information**Name** DAZL**Synonyms** DAZH, DAZL1, DAZLA, SPGYLA**Function**

RNA-binding protein, which is essential for gametogenesis in both males and females. Plays a central role during spermatogenesis. Acts by binding to the 3'-UTR of mRNA, specifically recognizing GUU triplets, and thereby regulating the translation of key transcripts (By similarity).

Cellular Location

Cytoplasm. Nucleus. Note=Predominantly cytoplasmic. Nuclear in spermatogonia until near the end of the meiotic prophase and cytoplasmic localization from then onward.

Tissue Location

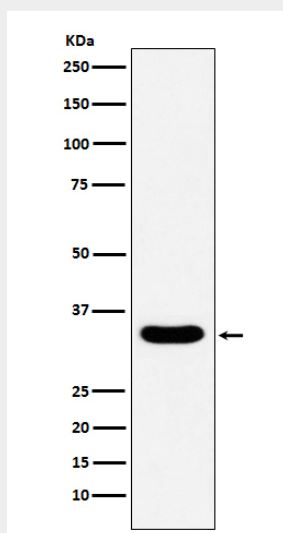
Testis specific.

DAZL Antibody - Protocols

Provided below are standard protocols that you may find useful for product applications.

- [Western Blot](#)
- [Blocking Peptides](#)
- [Dot Blot](#)
- [Immunohistochemistry](#)
- [Immunofluorescence](#)
- [Immunoprecipitation](#)
- [Flow Cytometry](#)
- [Cell Culture](#)

DAZL Antibody - Images



Western blot analysis of DAZL expression in human testis lysate.