

Ferritin Light Chain Antibody
Rabbit mAb
Catalog # AP91385**Specification****Ferritin Light Chain Antibody - Product Information**

Application	WB, FC, IP
Primary Accession	P02792
Reactivity	Rat
Clonality	Monoclonal

Other Names

Ferritin L chain; Ferritin L subunit; Ferritin light chain; Ferritin light polypeptide; ferritin light polypeptide like 3; FTL; LFTD; NBIA 3;

Isotype	Rabbit IgG
Host	Rabbit
Calculated MW	20020 Da

Ferritin Light Chain Antibody - Additional Information

Dilution	WB~~1:1000 FC~~1:10~50 IP~~N/A
Purification	Affinity-chromatography
Immunogen	A synthesized peptide derived from human Ferritin Light Chain
Description	Stores iron in a soluble, non-toxic, readily available form. Important for iron homeostasis. Iron is taken up in the ferrous form and deposited as ferric hydroxides after oxidation. Also plays a role in delivery of iron to cells. Mediates iron uptake in capsule cells of the developing kidney.
Storage Condition and Buffer	Rabbit IgG in phosphate buffered saline , pH 7.4, 150mM NaCl, 0.02% sodium azide and 50% glycerol. Store at +4°C short term. Store at -20°C long term. Avoid freeze / thaw cycle.

Ferritin Light Chain Antibody - Protein Information**Name** FTL**Function**

Stores iron in a soluble, non-toxic, readily available form. Important for iron homeostasis. Iron is taken up in the ferrous form and deposited as ferric hydroxides after oxidation. Also plays a role in delivery of iron to cells. Mediates iron uptake in capsule cells of the developing kidney (By similarity). Delivery to lysosomes by the cargo receptor NCOA4 for autophagic degradation and

release or iron (PubMed:24695223).

Cellular Location

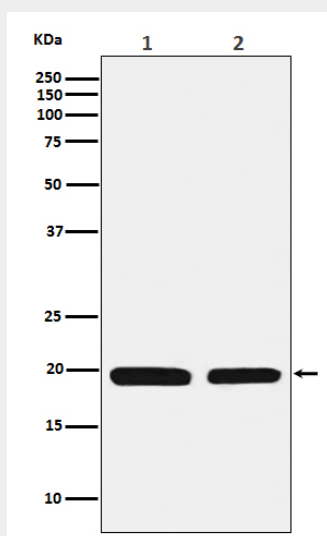
Cytoplasmic vesicle, autophagosome. Cytoplasm {ECO:0000250|UniProtKB:P29391}.
Autolysosome {ECO:0000250|UniProtKB:P29391}

Ferritin Light Chain Antibody - Protocols

Provided below are standard protocols that you may find useful for product applications.

- [Western Blot](#)
- [Blocking Peptides](#)
- [Dot Blot](#)
- [Immunohistochemistry](#)
- [Immunofluorescence](#)
- [Immunoprecipitation](#)
- [Flow Cytometry](#)
- [Cell Culture](#)

Ferritin Light Chain Antibody - Images



Western blot analysis of Ferritin Light Chain expression in (1) HepG2 cell lysate; (2) Mouse liver lysate.