

SERPINC1 Antibody
Rabbit mAb
Catalog # AP91390**Specification**

SERPINC1 Antibody - Product Information

Application	WB, ICC
Primary Accession	P01008
Clonality	Monoclonal
Other Names	
Antithrombin; Antithrombin III; AT 3; AT III; AT3; AT3D; ATIII; Heparin cofactor I; Serpin C1; Serpin family C member 1; SERPINC1; THPH7;	
Isotype	Rabbit IgG
Host	Rabbit
Calculated MW	52602 Da

SERPINC1 Antibody - Additional Information

Dilution	WB~~1:1000 ICC~~N/A
Purification	Affinity-chromatography
Immunogen	A synthesized peptide derived from human SERPINC1
Description	Most important serine protease inhibitor in plasma that regulates the blood coagulation cascade. AT-III inhibits thrombin as well as factors IXa, Xa and XIa. Its inhibitory activity is greatly enhanced in the presence of heparin.
Storage Condition and Buffer	Rabbit IgG in phosphate buffered saline , pH 7.4, 150mM NaCl, 0.02% sodium azide and 50% glycerol. Store at +4°C short term. Store at -20°C long term. Avoid freeze / thaw cycle.

SERPINC1 Antibody - Protein Information**Name** SERPINC1**Synonyms** AT3**Function**

Most important serine protease inhibitor in plasma that regulates the blood coagulation cascade (PubMed:15140129, PubMed:15853774). AT-III inhibits thrombin, matriptase-3/TMPRSS7, as well as factors IXa, Xa and XIa (PubMed:15140129). Its inhibitory activity is greatly enhanced in the presence of heparin.

Cellular Location

Secreted, extracellular space.

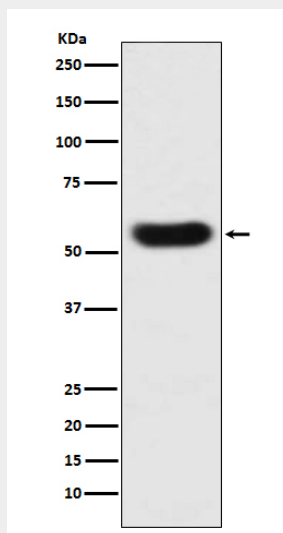
Tissue Location

Found in plasma.

SERPINC1 Antibody - Protocols

Provided below are standard protocols that you may find useful for product applications.

- [Western Blot](#)
- [Blocking Peptides](#)
- [Dot Blot](#)
- [Immunohistochemistry](#)
- [Immunofluorescence](#)
- [Immunoprecipitation](#)
- [Flow Cytometry](#)
- [Cell Culture](#)

SERPINC1 Antibody - Images

Western blot analysis of SERPINC1 expression in human plasma lysate.