

**ORM1 Antibody**  
**Rabbit mAb**  
**Catalog # AP91394****Specification**

---

**ORM1 Antibody - Product Information**

Application	WB, IHC
Primary Accession	<a href="#">P02763</a>
Clonality	Monoclonal
<b>Other Names</b>	
AGP 1; AGP A; AGP1; Alpha 1 acid glycoprotein; alpha-1-AGP; HEL S 153w; ORM; Orosomucoid 1;	
Isotype	Rabbit IgG
Host	Rabbit
Calculated MW	23512 Da

**ORM1 Antibody - Additional Information**

Dilution	WB~~1:1000 IHC~~1:100~500
Purification	Affinity-chromatography
Immunogen	A synthesized peptide derived from human ORM1
Description	Appears to function in modulating the activity of the immune system during the acute-phase reaction.
Storage Condition and Buffer	Rabbit IgG in phosphate buffered saline , pH 7.4, 150mM NaCl, 0.02% sodium azide and 50% glycerol. Store at +4°C short term. Store at -20°C long term. Avoid freeze / thaw cycle.

**ORM1 Antibody - Protein Information****Name** ORM1**Synonyms** AGP1**Function**

Functions as a transport protein in the blood stream. Binds various ligands in the interior of its beta-barrel domain. Also binds synthetic drugs and influences their distribution and availability in the body. Appears to function in modulating the activity of the immune system during the acute-phase reaction.

**Cellular Location**

Secreted.

**Tissue Location**

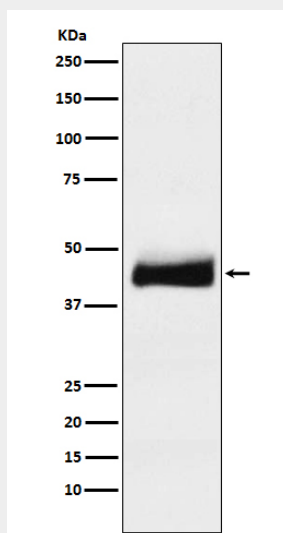
Expressed by the liver and secreted in plasma.

## ORM1 Antibody - Protocols

Provided below are standard protocols that you may find useful for product applications.

- [Western Blot](#)
- [Blocking Peptides](#)
- [Dot Blot](#)
- [Immunohistochemistry](#)
- [Immunofluorescence](#)
- [Immunoprecipitation](#)
- [Flow Cytometry](#)
- [Cell Culture](#)

## ORM1 Antibody - Images



Western blot analysis of ORM1 expression in human testis lysate.