

**OGG1 Antibody**  
**Rabbit mAb**  
**Catalog # AP91396****Specification**

---

**OGG1 Antibody - Product Information**

Application	WB
Primary Accession	<a href="#">O15527</a>
Clonality	Monoclonal
<b>Other Names</b>	
8 hydroxyguanine DNA glycosylase; AP lyase; HMMH; HOGG1; MMH; MUTM; N glycosylase; Ogg1; OGH 1;	
Isotype	Rabbit IgG
Host	Rabbit
Calculated MW	38782 Da

**OGG1 Antibody - Additional Information**

Dilution	WB~~1:1000
Purification	Affinity-chromatography
Immunogen	A synthesized peptide derived from human OGG1
Description	DNA repair enzyme that incises DNA at 8-oxoG residues. Excises 7,8-dihydro-8-oxoguanine and 2,6-diamino-4-hydroxy-5-N-methylformamidopyrimidine (FAPY) from damaged DNA. Has a beta-lyase activity that nicks DNA 3' to the lesion.
Storage Condition and Buffer	Rabbit IgG in phosphate buffered saline , pH 7.4, 150mM NaCl, 0.02% sodium azide and 50% glycerol. Store at +4°C short term. Store at -20°C long term. Avoid freeze / thaw cycle.

**OGG1 Antibody - Protein Information****Name** OGG1**Synonyms** MMH, MUTM, OGH1**Function**

DNA repair enzyme that incises DNA at 8-oxoG residues. Excises 7,8-dihydro-8-oxoguanine and 2,6-diamino-4-hydroxy-5-N- methylformamidopyrimidine (FAPY) from damaged DNA. Has a beta-lyase activity that nicks DNA 3' to the lesion.

**Cellular Location**

Nucleus, nucleoplasm. Nucleus speckle. Nucleus matrix. Note=Together with APEX1 is recruited to

nuclear speckles in UVA-irradiated cells [Isoform 2A]: Mitochondrion.

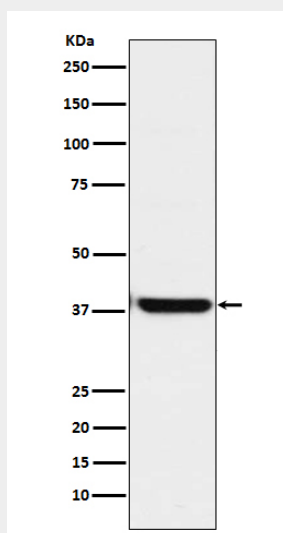
**Tissue Location**

Ubiquitous.

**OGG1 Antibody - Protocols**

Provided below are standard protocols that you may find useful for product applications.

- [Western Blot](#)
- [Blocking Peptides](#)
- [Dot Blot](#)
- [Immunohistochemistry](#)
- [Immunofluorescence](#)
- [Immunoprecipitation](#)
- [Flow Cytometry](#)
- [Cell Culture](#)

**OGG1 Antibody - Images**

Western blot analysis of OGG1 expression in HepG2 cell lysate.