

TXNRD1 Antibody
Rabbit mAb
Catalog # AP91399**Specification****TXNRD1 Antibody - Product Information**

Application	WB, IHC, FC, ICC, IP
Primary Accession	Q16881
Reactivity	Rat
Clonality	Monoclonal
Other Names	
GRIM12; KDRF; KM 102 derived reductase like factor; xidoreductase; Thioredoxin reductase 1; TR1; TRXR1; TXNR; TXNRD1	
Isotype	Rabbit IgG
Host	Rabbit
Calculated MW	70906 Da

TXNRD1 Antibody - Additional Information

Dilution	WB~~1:1000 IHC~~1:100~500 FC~~1:10~50 ICC~~N/A IP~~N/A
Purification	Affinity-chromatography
Immunogen	A synthesized peptide derived from human TXNRD1
Description	Isoform 1 may possess glutaredoxin activity as well as thioredoxin reductase activity and induces actin and tubulin polymerization, leading to formation of cell membrane protrusions. Isoform 4 enhances the transcriptional activity of estrogen receptors alpha and beta while isoform 5 enhances the transcriptional activity of the beta receptor only. Isoform 5 also mediates cell death induced by a combination of interferon-beta and retinoic acid.
Storage Condition and Buffer	Rabbit IgG in phosphate buffered saline , pH 7.4, 150mM NaCl, 0.02% sodium azide and 50% glycerol. Store at +4°C short term. Store at -20°C long term. Avoid freeze / thaw cycle.

TXNRD1 Antibody - Protein Information**Name** TXNRD1 ([HGNC:12437](#))

Synonyms GRIM12, KDRF

Function

Reduces disulfideprotein thioredoxin (Trx) to its dithiol- containing form (PubMed:8577704). Homodimeric flavoprotein involved in the regulation of cellular redox reactions, growth and differentiation. Contains a selenocysteine residue at the C-terminal active site that is essential for catalysis (Probable). Also has reductase activity on hydrogen peroxide (H₂O₂) (PubMed:10849437).

Cellular Location

[Isoform 1]: Cytoplasm [Isoform 5]: Cytoplasm

Tissue Location

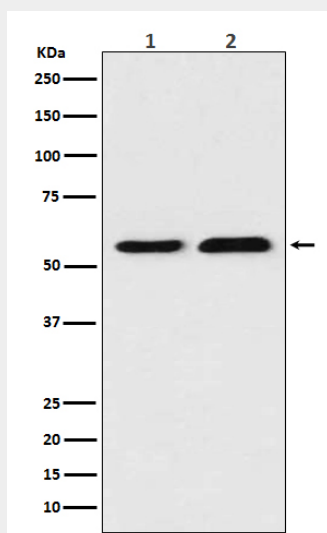
[Isoform 1]: Expressed predominantly in Leydig cells (at protein level). Also expressed in ovary, spleen, heart, liver, kidney and pancreas and in a number of cancer cell lines

TXNRD1 Antibody - Protocols

Provided below are standard protocols that you may find useful for product applications.

- [Western Blot](#)
- [Blocking Peptides](#)
- [Dot Blot](#)
- [Immunohistochemistry](#)
- [Immunofluorescence](#)
- [Immunoprecipitation](#)
- [Flow Cytometry](#)
- [Cell Culture](#)

TXNRD1 Antibody - Images



Western blot analysis of TXNRD1 expression in (1) Jurkat cell lysate; (2) NIH/3T3 cell lysate.