

KLKB1 Antibody
Rabbit mAb
Catalog # AP91408**Specification**

KLKB1 Antibody - Product Information

| | |
|--|------------------------|
| Application | WB, IHC, IP |
| Primary Accession | P03952 |
| Reactivity | Rat |
| Clonality | Monoclonal |
| Other Names | |
| Fletcher factor; kallikrein B plasma; Kallikrein B1; Kininogenin; KLK3; KLKB1; PKK; PKKD; Plasma kallikrein light chain; PPK; Prekallikrein; | |
| Isotype | Rabbit IgG |
| Host | Rabbit |
| Calculated MW | 71370 Da |

KLKB1 Antibody - Additional Information

| | |
|------------------------------|--|
| Dilution | WB~~1:1000 IHC~~1:100~500 IP~~N/A |
| Purification | Affinity-chromatography |
| Immunogen | A synthesized peptide derived from human KLKB1 |
| Description | The enzyme cleaves Lys-Arg and Arg-Ser bonds. It activates, in a reciprocal reaction, factor XII after its binding to a negatively charged surface. It also releases bradykinin from HMW kininogen and may also play a role in the renin-angiotensin system by converting prorenin into renin. |
| Storage Condition and Buffer | Rabbit IgG in phosphate buffered saline , pH 7.4, 150mM NaCl, 0.02% sodium azide and 50% glycerol. Store at +4°C short term. Store at -20°C long term. Avoid freeze / thaw cycle. |

KLKB1 Antibody - Protein Information**Name** KLKB1**Synonyms** KLK3**Function**

Participates in the surface-dependent activation of blood coagulation. Activates, in a reciprocal reaction, coagulation factor XII/F12 after binding to negatively charged surfaces. Releases

bradykinin from HMW kininogen and may also play a role in the renin- angiotensin system by converting prorenin into renin.

Cellular Location

Secreted.

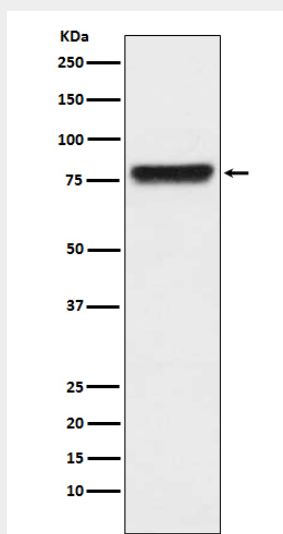
Tissue Location

Found in plasma (at protein level).

KLKB1 Antibody - Protocols

Provided below are standard protocols that you may find useful for product applications.

- [Western Blot](#)
- [Blocking Peptides](#)
- [Dot Blot](#)
- [Immunohistochemistry](#)
- [Immunofluorescence](#)
- [Immunoprecipitation](#)
- [Flow Cytometry](#)
- [Cell Culture](#)

KLKB1 Antibody - Images

Western blot analysis of KLKB1 expression in human plasma lysate.