

**CD42b Antibody**  
**Rabbit mAb**  
**Catalog # AP91420****Specification**

---

**CD42b Antibody - Product Information**

Application	WB, IHC
Primary Accession	<a href="#">P07359</a>
Clonality	Monoclonal
<b>Other Names</b>	
Antigen CD42b alpha; BDPLT1; BDPLT3; BSS; CD42b alpha; DBPLT3; Glycoprotein Ibalpha; GP Ib alpha; GP1B; GP1BA; GPIb alpha; GPIbA; VWDP;	
Isotype	Rabbit IgG
Host	Rabbit
Calculated MW	71540 Da

**CD42b Antibody - Additional Information**

Dilution	WB~~1:1000 IHC~~1:100~500
Purification	Affinity-chromatography
Immunogen	A synthesized peptide derived from human CD42b
Description	CD42b is a platelet activation marker involved in the process of coagulation as an aggregating factor. It interacts with extracellular matrix as well as with adhesion molecules. Its expression and activation seems to be regulated by VEGF and PDGF.
Storage Condition and Buffer	Rabbit IgG in phosphate buffered saline , pH 7.4, 150mM NaCl, 0.02% sodium azide and 50% glycerol. Store at +4°C short term. Store at -20°C long term. Avoid freeze / thaw cycle.

**CD42b Antibody - Protein Information****Name** GP1BA**Function**

GP-Ib, a surface membrane protein of platelets, participates in the formation of platelet plugs by binding to the A1 domain of vWF, which is already bound to the subendothelium.

**Cellular Location**

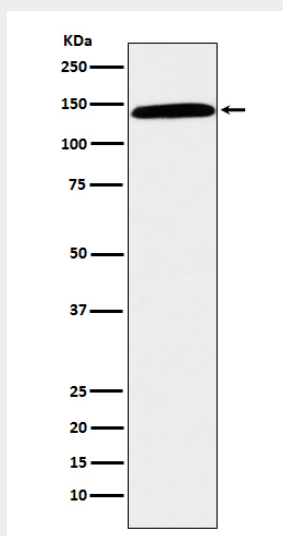
Membrane; Single-pass type I membrane protein.

## CD42b Antibody - Protocols

Provided below are standard protocols that you may find useful for product applications.

- [Western Blot](#)
- [Blocking Peptides](#)
- [Dot Blot](#)
- [Immunohistochemistry](#)
- [Immunofluorescence](#)
- [Immunoprecipitation](#)
- [Flow Cytometry](#)
- [Cell Culture](#)

## CD42b Antibody - Images



Western blot analysis of CD42b expression in human spleen lysate.