

mSin3A Antibody
Rabbit mAb
Catalog # AP91428**Specification**

mSin3A Antibody - Product Information

Application	WB, IHC, FC, ICC
Primary Accession	Q96ST3
Reactivity	Rat
Clonality	Monoclonal
Other Names	
Histone deacetylase complex subunit Sin 3a; Paired amphipathic helix protein Sin 3a; SIN3 homolog A;	
Isotype	Rabbit IgG
Host	Rabbit
Calculated MW	145175 Da

mSin3A Antibody - Additional Information

Dilution	WB~~1:1000 IHC~~1:100~500 FC~~1:10~50 ICC~~N/A
Purification	Affinity-chromatography
Immunogen	A synthesized peptide derived from human mSin3A
Description	Acts as a transcriptional repressor. Interacts with MXI1 to repress MYC responsive genes and antagonize MYC oncogenic activities. Also interacts with MAD-MAX heterodimers by binding to MAD. The heterodimer then represses transcription by tethering SIN3A to DNA. Acts as a corepressor for REST.
Storage Condition and Buffer	Rabbit IgG in phosphate buffered saline , pH 7.4, 150mM NaCl, 0.02% sodium azide and 50% glycerol. Store at +4°C short term. Store at -20°C long term. Avoid freeze / thaw cycle.

mSin3A Antibody - Protein Information**Name** SIN3A ([HGNC:19353](#))**Function**

Acts as a transcriptional repressor. Corepressor for REST. Interacts with MXI1 to repress MYC responsive genes and antagonize MYC oncogenic activities. Also interacts with MXD1-MAX heterodimers to repress transcription by tethering SIN3A to DNA. Acts cooperatively with OGT to

repress transcription in parallel with histone deacetylation. Involved in the control of the circadian rhythms. Required for the transcriptional repression of circadian target genes, such as PER1, mediated by the large PER complex through histone deacetylation. Cooperates with FOXK1 to regulate cell cycle progression probably by repressing cell cycle inhibitor genes expression (By similarity). Required for cortical neuron differentiation and callosal axon elongation (By similarity).

Cellular Location

Nucleus {ECO:0000255|PROSITE-ProRule:PRU00810, ECO:0000269|PubMed:16820529}. Nucleus, nucleolus. Note=Recruited to the nucleolus by SAP30L

Tissue Location

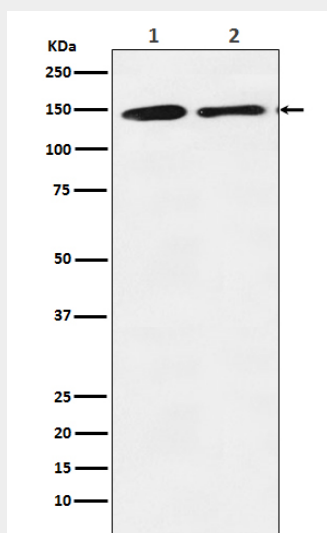
Expressed in the developing brain, with highest levels of expression detected in the ventricular zone of various cortical regions.

mSin3A Antibody - Protocols

Provided below are standard protocols that you may find useful for product applications.

- [Western Blot](#)
- [Blocking Peptides](#)
- [Dot Blot](#)
- [Immunohistochemistry](#)
- [Immunofluorescence](#)
- [Immunoprecipitation](#)
- [Flow Cytometry](#)
- [Cell Culture](#)

mSin3A Antibody - Images



Western blot analysis of mSin3A expression in (1) K562 cell lysate; (2) RAW 264.7 cell lysate.