

CRMP2 Antibody
Rabbit mAb
Catalog # AP91433**Specification**

CRMP2 Antibody - Product Information

Application	WB, IHC, FC, ICC, IP
Primary Accession	Q16555
Reactivity	Rat
Clonality	Monoclonal
Other Names	
DRP2; CRMP-2; N2A3; Unc-33-like phosphoprotein 2; ULIP-2; DPYSL2; CRMP2; ULIP2; Musunc33; TOAD64;	
Isotype	Rabbit IgG
Host	Rabbit
Calculated MW	62294 Da

CRMP2 Antibody - Additional Information

Dilution	WB~~1:1000 IHC~~1:100~500 FC~~1:10~50 ICC~~N/A IP~~N/A
Purification	Affinity-chromatography
Immunogen	A synthesized peptide derived from human CRMP2
Description	Necessary for signaling by class 3 semaphorins and subsequent remodeling of the cytoskeleton. Plays a role in axon guidance, neuronal growth cone collapse and cell migration.
Storage Condition and Buffer	Rabbit IgG in phosphate buffered saline , pH 7.4, 150mM NaCl, 0.02% sodium azide and 50% glycerol. Store at +4°C short term. Store at -20°C long term. Avoid freeze / thaw cycle.

CRMP2 Antibody - Protein Information**Name** DPYSL2**Synonyms** CRMP2, ULIP2**Function**

Plays a role in neuronal development and polarity, as well as in axon growth and guidance, neuronal growth cone collapse and cell migration. Necessary for signaling by class 3 semaphorins and subsequent remodeling of the cytoskeleton. May play a role in endocytosis.

Cellular Location

Cytoplasm, cytosol. Cytoplasm, cytoskeleton. Membrane. Note=Tightly but non-covalently associated with membranes

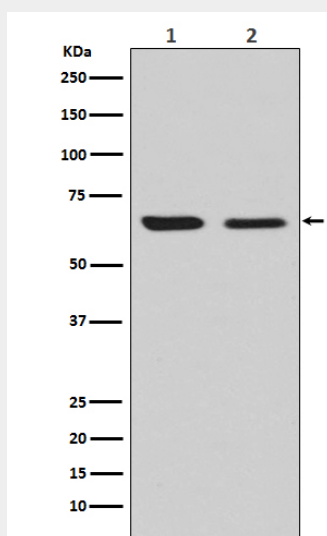
Tissue Location

Ubiquitous.

CRMP2 Antibody - Protocols

Provided below are standard protocols that you may find useful for product applications.

- [Western Blot](#)
- [Blocking Peptides](#)
- [Dot Blot](#)
- [Immunohistochemistry](#)
- [Immunofluorescence](#)
- [Immunoprecipitation](#)
- [Flow Cytometry](#)
- [Cell Culture](#)

CRMP2 Antibody - Images

Western blot analysis of CRMP2 expression in (1) U87-MG cell lysate; (2) NIH/3T3 cell lysate.