

Zic1 Antibody
Rabbit mAb
Catalog # AP91440

Specification

Zic1 Antibody - Product Information

Application	WB, FC, ICC
Primary Accession	Q15915
Reactivity	Rat
Clonality	Monoclonal
Other Names	
ZIC; Zic protein member 1; Zinc finger protein 201; Zinc finger protein ZIC1; ZNF201;	
Isotype	Rabbit IgG
Host	Rabbit
Calculated MW	48309 Da

Zic1 Antibody - Additional Information

Dilution	WB~~1:1000 FC~~1:10~50 ICC~~N/A
Purification	Affinity-chromatography
Immunogen	A synthesized peptide derived from human Zic1
Description	Acts as a transcriptional activator. Involved in neurogenesis. Plays important roles in the early stage of organogenesis of the CNS, as well as during dorsal spinal cord development and maturation of the cerebellum. Involved in the spatial distribution of mossy fiber (MF) neurons within the pontine gray nucleus (PGN). Plays a role in the regulation of MF axon pathway choice. Promotes MF migration towards ipsilaterally-located cerebellar territories.
Storage Condition and Buffer	Rabbit IgG in phosphate buffered saline , pH 7.4, 150mM NaCl, 0.02% sodium azide and 50% glycerol. Store at +4°C short term. Store at -20°C long term. Avoid freeze / thaw cycle.

Zic1 Antibody - Protein Information

Name ZIC1

Synonyms ZIC, ZNF201

Function

Acts as a transcriptional activator. Involved in neurogenesis. Plays important roles in the early stage of organogenesis of the CNS, as well as during dorsal spinal cord development and maturation of the cerebellum. Involved in the spatial distribution of mossy fiber (MF) neurons within the pontine gray nucleus (PGN). Plays a role in the regulation of MF axon pathway choice. Promotes MF migration towards ipsilaterally-located cerebellar territories. May have a role in shear flow mechanotransduction in osteocytes. Retains nuclear GLI1 and GLI3 in the cytoplasm. Binds to the minimal GLI-consensus sequence 5'-TGGGTGGTC-3' (By similarity).

Cellular Location

Nucleus. Cytoplasm. Note=Localizes in the cytoplasm in presence of MDFIC overexpression.

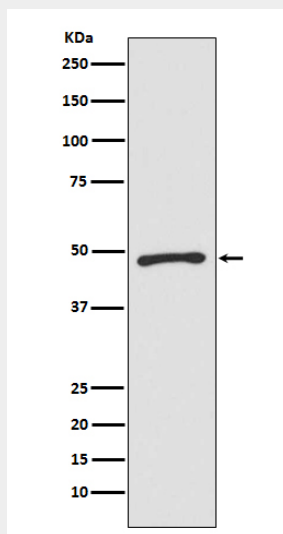
Tissue Location

CNS. A high level expression is seen in the cerebellum. Detected in the nuclei of the cerebellar granule cell lineage from the progenitor cells of the external germinal layer to the postmigrated cells of the internal granular layer. Detected in medulloblastoma (26/29 cases), but not present in all other tumors examined.

Zic1 Antibody - Protocols

Provided below are standard protocols that you may find useful for product applications.

- [Western Blot](#)
- [Blocking Peptides](#)
- [Dot Blot](#)
- [Immunohistochemistry](#)
- [Immunofluorescence](#)
- [Immunoprecipitation](#)
- [Flow Cytometry](#)
- [Cell Culture](#)

Zic1 Antibody - Images

Western blot analysis of Zic1 expression in SW480 cell lysate.