

**Emerin Antibody**  
**Rabbit mAb**  
**Catalog # AP91460**

## Specification

---

### Emerin Antibody - Product Information

Application	WB, IHC, ICC
Primary Accession	<a href="#">P50402</a>
Reactivity	Rat
Clonality	Monoclonal

#### Other Names

EDMD; Emd; Emerin; Emery Dreifuss muscular dystrophy; STA;

Isotype	Rabbit IgG
Host	Rabbit
Calculated MW	28994 Da

### Emerin Antibody - Additional Information

Dilution	WB~~1:1000 IHC~~1:100~500 ICC~~N/A
Purification	Affinity-chromatography
Immunogen	A synthesized peptide derived from human Emerin
Description	Emerin may regulate gene expression through binding to other transcriptional regulators. Emerin binds to $\beta$ -catenin and inhibits its nuclear accumulation. Recent studies demonstrate that Emerin is required for HIV-1 infectivity.
Storage Condition and Buffer	Rabbit IgG in phosphate buffered saline , pH 7.4, 150mM NaCl, 0.02% sodium azide and 50% glycerol. Store at +4°C short term. Store at -20°C long term. Avoid freeze / thaw cycle.

### Emerin Antibody - Protein Information

**Name** EMD

**Synonyms** EDMD, STA

#### Function

Stabilizes and promotes the formation of a nuclear actin cortical network. Stimulates actin polymerization in vitro by binding and stabilizing the pointed end of growing filaments. Inhibits beta- catenin activity by preventing its accumulation in the nucleus. Acts by influencing the nuclear accumulation of beta-catenin through a CRM1- dependent export pathway. Links centrosomes to the nuclear envelope via a microtubule association. Required for proper

localization of non-farnesylated prelamin-A/C. Together with NEMP1, contributes to nuclear envelope stiffness in germ cells (PubMed:<a href="http://www.uniprot.org/citations/32923640" target="\_blank">32923640</a>). EMD and BAF are cooperative cofactors of HIV-1 infection. Association of EMD with the viral DNA requires the presence of BAF and viral integrase. The association of viral DNA with chromatin requires the presence of BAF and EMD.

#### Cellular Location

Nucleus inner membrane; Single-pass membrane protein; Nucleoplasmic side. Nucleus outer membrane. Note=Colocalized with BANF1 at the central region of the assembling nuclear rim, near spindle-attachment sites. The accumulation of different intermediates of prelamin-A/C (non-farnesylated or carboxymethylated farnesylated prelamin-A/C) in fibroblasts modify its localization in the nucleus

#### Tissue Location

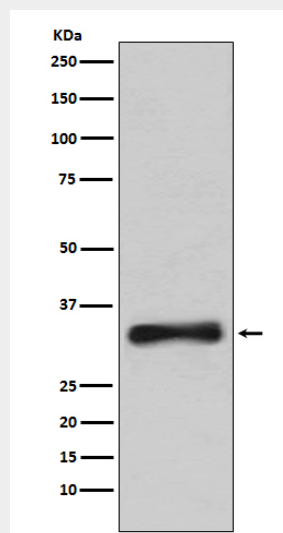
Skeletal muscle, heart, colon, testis, ovary and pancreas

### Emerin Antibody - Protocols

Provided below are standard protocols that you may find useful for product applications.

- [Western Blot](#)
- [Blocking Peptides](#)
- [Dot Blot](#)
- [Immunohistochemistry](#)
- [Immunofluorescence](#)
- [Immunoprecipitation](#)
- [Flow Cytometry](#)
- [Cell Culture](#)

### Emerin Antibody - Images



Western blot analysis of Emerin expression in 293T cell lysate.