

HP1 gamma Antibody
Rabbit mAb
Catalog # AP91462

Specification

HP1 gamma Antibody - Product Information

Application **WB, IHC, FC, IP**
Primary Accession [O13185](#)
Reactivity **Rat**
Clonality **Monoclonal**

Other Names

Chromobox protein homolog 3; HECH; Heterochromatin protein 1 homolog gamma; HP1 gamma; Modifier 2 protein; CBX3; HP1 gamma;

Isotype **Rabbit IgG**
Host **Rabbit**
Calculated MW **20811 Da**

HP1 gamma Antibody - Additional Information

Dilution **WB~~1:1000
IHC~~1:100~500
FC~~1:10~50
IP~~N/A**

Purification **Affinity-chromatography**
Immunogen **A synthesized peptide derived from human HP1 gamma**

Description **Recognizes and binds histone H3 tails methylated at 'Lys-9', leading to epigenetic repression. May contribute to the association of the heterochromatin with the inner nuclear membrane through its interaction with lamin B receptor (LBR). Involved in the formation of functional kinetochore through interaction with MIS12 complex proteins.**

Storage Condition and Buffer **Rabbit IgG in phosphate buffered saline , pH 7.4, 150mM NaCl, 0.02% sodium azide and 50% glycerol. Store at +4°C short term. Store at -20°C long term. Avoid freeze / thaw cycle.**

HP1 gamma Antibody - Protein Information

Name CBX3

Function

Component of heterochromatin, which recognizes and binds histone H3 tails methylated at 'Lys-9', leading to epigenetic repression (PubMed: <http://www.uniprot.org/citations/11242053>)

target="_blank">11242053). Also recognizes and binds histone H1.4 methylated at 'Lys-26' (H1.4K26me) (PubMed:16127177). Excluded from chromatin when histone H1.4 is Simultaneously methylated at Lys-26 (H1.4K26me) and phosphorylated at Ser-27 (H1.4S27Ph) (PubMed:16127177). Involved in the formation of functional kinetochore through interaction with MIS12 complex proteins (PubMed:15502821). Contributes to the conversion of local chromatin to a heterochromatin-like repressive state through H3 'Lys-9' trimethylation, mediates the recruitment of the methyltransferases SUV39H1 and/or SUV39H2 by the PER complex to the E-box elements of the circadian target genes such as PER2 itself or PER1 (By similarity). Mediates the recruitment of NIPBL to sites of DNA damage at double-strand breaks (DSBs) (PubMed:28167679).

Cellular Location

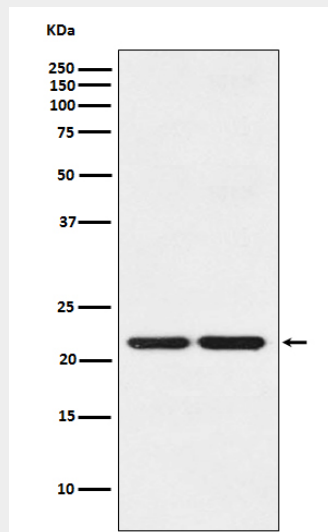
Nucleus. Note=Associates with euchromatin and is largely excluded from constitutive heterochromatin. May be associated with microtubules and mitotic poles during mitosis (Potential).

HP1 gamma Antibody - Protocols

Provided below are standard protocols that you may find useful for product applications.

- [Western Blot](#)
- [Blocking Peptides](#)
- [Dot Blot](#)
- [Immunohistochemistry](#)
- [Immunofluorescence](#)
- [Immunoprecipitation](#)
- [Flow Cytometry](#)
- [Cell Culture](#)

HP1 gamma Antibody - Images



Western blot analysis of HP1 gamma expression in (1) HeLa cell lysate; (2) NIH/3T3 cell lysate.