

**Superoxide Dismutase 3 Antibody**  
**Rabbit mAb**  
**Catalog # AP91464****Specification**

---

**Superoxide Dismutase 3 Antibody - Product Information**

Application	WB, IHC
Primary Accession	<a href="#">P08294</a>
Clonality	Monoclonal
<b>Other Names</b>	
EC SOD; Extracellular superoxide dismutase [Cu Zn]; Extracellular superoxide dismutase precursor; SOD3; Superoxide dismutase 3 extracellular;	
Isotype	Rabbit IgG
Host	Rabbit
Calculated MW	25851 Da

**Superoxide Dismutase 3 Antibody - Additional Information**

Dilution	WB~~1:1000 IHC~~1:100~500
Purification	Affinity-chromatography
Immunogen	A synthesized peptide derived from human Superoxide Dismutase 3
Description	Protect the extracellular space from toxic effect of reactive oxygen intermediates by converting superoxide radicals into hydrogen peroxide and oxygen.
Storage Condition and Buffer	Rabbit IgG in phosphate buffered saline , pH 7.4, 150mM NaCl, 0.02% sodium azide and 50% glycerol. Store at +4°C short term. Store at -20°C long term. Avoid freeze / thaw cycle.

**Superoxide Dismutase 3 Antibody - Protein Information****Name** SOD3**Function**

Protect the extracellular space from toxic effect of reactive oxygen intermediates by converting superoxide radicals into hydrogen peroxide and oxygen.

**Cellular Location**

Secreted, extracellular space. Golgi apparatus, trans-Golgi network {ECO:0000250|UniProtKB:O09164}. Note=99% of EC-SOD is anchored to heparan sulfate proteoglycans in the tissue interstitium, and 1% is located in the vasculature in equilibrium between the plasma and the endothelium

**Tissue Location**

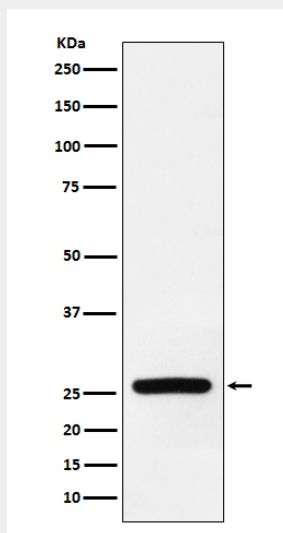
Expressed in blood vessels, heart, lung, kidney and placenta. Major SOD isoenzyme in extracellular fluids such as plasma, lymph and synovial fluid

### **Superoxide Dismutase 3 Antibody - Protocols**

Provided below are standard protocols that you may find useful for product applications.

- [Western Blot](#)
- [Blocking Peptides](#)
- [Dot Blot](#)
- [Immunohistochemistry](#)
- [Immunofluorescence](#)
- [Immunoprecipitation](#)
- [Flow Cytometry](#)
- [Cell Culture](#)

### **Superoxide Dismutase 3 Antibody - Images**



Western blot analysis of Superoxide Dismutase 3 expression in human fetal heart lysate.