

**PDE4D Antibody**  
**Rabbit mAb**  
**Catalog # AP91467****Specification**

---

**PDE4D Antibody - Product Information**

Application	WB
Primary Accession	<a href="#">Q08499</a>
Reactivity	Human
Clonality	Monoclonal
<b>Other Names</b>	
cAMP-specific 3', 5'-cyclic phosphodiesterase 4D; DPDE3; PDE43; PDE4D; DPDE3;	
Isotype	Rabbit IgG
Host	Rabbit
Calculated MW	91115 Da

**PDE4D Antibody - Additional Information**

Purification	Affinity-chromatography
Immunogen	A synthesized peptide derived from human PDE4D
Description	Hydrolyzes the second messenger cAMP, which is a key regulator of many important physiological processes.
Storage Condition and Buffer	Rabbit IgG in phosphate buffered saline , pH 7.4, 150mM NaCl, 0.02% sodium azide and 50% glycerol. Store at +4°C short term. Store at -20°C long term. Avoid freeze / thaw cycle.

**PDE4D Antibody - Protein Information****Name** PDE4D ([HGNC:8783](#))**Synonyms** DPDE3**Function**

Hydrolyzes the second messenger cAMP, which is a key regulator of many important physiological processes.

**Cellular Location**

Apical cell membrane. Cytoplasm. Membrane. Cytoplasm, cytoskeleton. Cytoplasm, cytoskeleton, microtubule organizing center, centrosome Note=Found in the soluble fraction, associated with membranes, and associated with the cytoskeleton and the centrosome (By similarity) Colocalized with SHANK2 to the apical membrane of colonic crypt cells

**Tissue Location**

Expressed in colonic epithelial cells (at protein level). Widespread; most abundant in skeletal

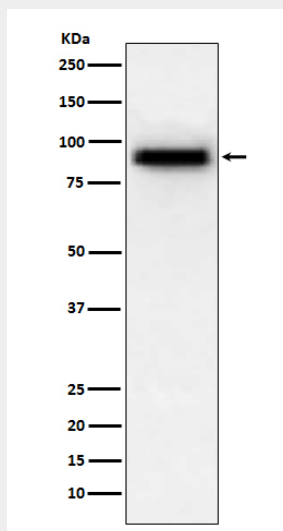
muscle [Isoform 8]: Detected in brain, placenta, lung and kidney.

### **PDE4D Antibody - Protocols**

Provided below are standard protocols that you may find useful for product applications.

- [Western Blot](#)
- [Blocking Peptides](#)
- [Dot Blot](#)
- [Immunohistochemistry](#)
- [Immunofluorescence](#)
- [Immunoprecipitation](#)
- [Flow Cytometry](#)
- [Cell Culture](#)

### **PDE4D Antibody - Images**



Western blot analysis of PDE4D expression in human fetal heart lysate.