

GAL4 Antibody
Rabbit mAb
Catalog # AP91473

Specification

GAL4 Antibody - Product Information

Application	WB, IHC
Primary Accession	P56470
Reactivity	Rat
Clonality	Monoclonal
Other Names	
L36LBP; Lactose binding lectin 4; Lectin galactoside binding soluble 4; LGALS4;	
Isotype	Rabbit IgG
Host	Rabbit
Calculated MW	35941 Da

GAL4 Antibody - Additional Information

Dilution	WB~~1:1000 IHC~~1:100~500
Purification	Affinity-chromatography
Immunogen	A synthesized peptide derived from human GAL4
Description	Galectin that binds lactose and a related range of sugars. May be involved in the assembly of adherens junctions.
Storage Condition and Buffer	Rabbit IgG in phosphate buffered saline , pH 7.4, 150mM NaCl, 0.02% sodium azide and 50% glycerol. Store at +4°C short term. Store at -20°C long term. Avoid freeze / thaw cycle.

GAL4 Antibody - Protein Information

Name LGALS4

Function

Galectin that binds lactose and a related range of sugars. May be involved in the assembly of adherens junctions.

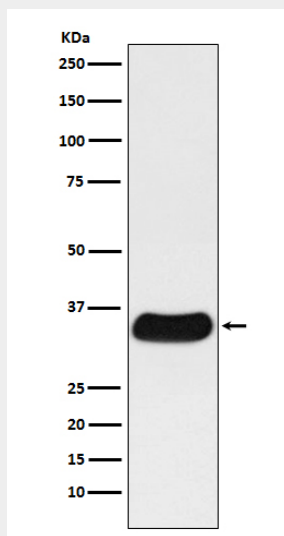
GAL4 Antibody - Protocols

Provided below are standard protocols that you may find useful for product applications.

- [Western Blot](#)
- [Blocking Peptides](#)

- [Dot Blot](#)
- [Immunohistochemistry](#)
- [Immunofluorescence](#)
- [Immunoprecipitation](#)
- [Flow Cytometry](#)
- [Cell Culture](#)

GAL4 Antibody - Images



Western blot analysis of GAL4 expression in rat small intestine lysate.