

alpha Actinin 4 Antibody
Rabbit mAb
Catalog # AP91490**Specification**

alpha Actinin 4 Antibody - Product Information

Application	WB, IHC, FC, ICC, IP
Primary Accession	O43707
Reactivity	Rat
Clonality	Monoclonal

Other Names

actinin 4; Actinin alpha 4; actinin4; ACTN 4; Alpha-actinin-4; F actin cross linking protein; Focal segmental glomerulosclerosis 1; FSGS1; Non muscle alpha actinin 4;

Isotype	Rabbit IgG
Host	Rabbit
Calculated MW	104854 Da

alpha Actinin 4 Antibody - Additional Information

Dilution	WB~~1:1000 IHC~~1:100~500 FC~~1:10~50 ICC~~N/A IP~~N/A
Purification	Affinity-chromatography
Immunogen	A synthesized peptide derived from human alpha Actinin 4
Description	F-actin cross-linking protein which is thought to anchor actin to a variety of intracellular structures. This is a bundling protein. Probably involved in vesicular trafficking via its association with the CART complex. The CART complex is necessary for efficient transferrin receptor recycling but not for EGFR degradation.
Storage Condition and Buffer	Rabbit IgG in phosphate buffered saline , pH 7.4, 150mM NaCl, 0.02% sodium azide and 50% glycerol. Store at +4°C short term. Store at -20°C long term. Avoid freeze / thaw cycle.

alpha Actinin 4 Antibody - Protein Information

Name ACTN4 ([HGNC:166](#))

Function

F-actin cross-linking protein which is thought to anchor actin to a variety of intracellular structures. This is a bundling protein (Probable). Probably involved in vesicular trafficking via its association

with the CART complex. The CART complex is necessary for efficient transferrin receptor recycling but not for EGFR degradation (PubMed:15772161). Involved in tight junction assembly in epithelial cells probably through interaction with MICALL2. Links MICALL2 to the actin cytoskeleton and recruits it to the tight junctions (By similarity). May also function as a transcriptional coactivator, stimulating transcription mediated by the nuclear hormone receptors PPARG and RARA (PubMed:22351778). Association with IGSF8 regulates the immune synapse formation and is required for efficient T-cell activation (PubMed:22689882).

Cellular Location

Nucleus. Cytoplasm. Cell junction {ECO:0000250|UniProtKB:P57780}. Cytoplasm, cytoskeleton, stress fiber. Cytoplasm, perinuclear region {ECO:0000250|UniProtKB:P57780}. Note=Localized in cytoplasmic mRNP granules containing untranslated mRNAs. Expressed in the perinuclear rim and manchette structure in early elongating spermatids during spermiogenesis (By similarity). Nuclear translocation can be induced by the PI3 kinase inhibitor wortmannin or by cytochalasin D. Exclusively localized in the nucleus in a limited number of cell lines (breast cancer cell line MCF-7, oral floor cancer IMC-2, and bladder cancer KU- 7). {ECO:0000250|UniProtKB:P57780, ECO:0000269|PubMed:17289661, ECO:0000269|PubMed:9508771}

Tissue Location

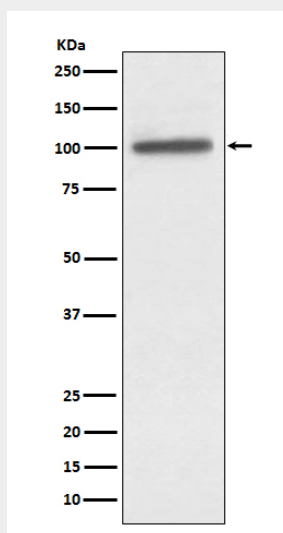
Widely expressed..

alpha Actinin 4 Antibody - Protocols

Provided below are standard protocols that you may find useful for product applications.

- [Western Blot](#)
- [Blocking Peptides](#)
- [Dot Blot](#)
- [Immunohistochemistry](#)
- [Immunofluorescence](#)
- [Immunoprecipitation](#)
- [Flow Cytometry](#)
- [Cell Culture](#)

alpha Actinin 4 Antibody - Images



Western blot analysis of alpha Actinin 4 expression in A431 cell lysate.