

**MCM7 Antibody**  
**Rabbit mAb**  
**Catalog # AP91495****Specification**

---

**MCM7 Antibody - Product Information**

Application	WB, IHC, FC, ICC, IP
Primary Accession	<a href="#">P33993</a>
Reactivity	Rat
Clonality	Monoclonal
<b>Other Names</b>	
CDC47 homolog; P1.1-MCM3; MCM7; CDC47; MCM2; P1CDC47; P85MCM; PNAS146; PPP1R104;	
Isotype	Rabbit IgG
Host	Rabbit
Calculated MW	81308 Da

**MCM7 Antibody - Additional Information**

Dilution	WB~~1:1000 IHC~~1:100~500 FC~~1:10~50 ICC~~N/A IP~~N/A
Purification	Affinity-chromatography
Immunogen	A synthesized peptide derived from human MCM7
Description	Acts as component of the MCM2-7 complex (MCM complex) which is the putative replicative helicase essential for 'once per cell cycle' DNA replication initiation and elongation in eukaryotic cells. The active ATPase sites in the MCM2-7 ring are formed through the interaction surfaces of two neighboring subunits such that a critical structure of a conserved arginine finger motif is provided in trans relative to the ATP-binding site of the Walker A box of the adjacent subunit.
Storage Condition and Buffer	Rabbit IgG in phosphate buffered saline , pH 7.4, 150mM NaCl, 0.02% sodium azide and 50% glycerol. Store at +4°C short term. Store at -20°C long term. Avoid freeze / thaw cycle.

**MCM7 Antibody - Protein Information****Name** MCM7 ([HGNC:6950](#))

**Synonyms** CDC47, MCM2**Function**

Acts as a component of the MCM2-7 complex (MCM complex) which is the replicative helicase essential for 'once per cell cycle' DNA replication initiation and elongation in eukaryotic cells. Core component of CDC45-MCM-GINS (CMG) helicase, the molecular machine that unwinds template DNA during replication, and around which the replisome is built (PubMed:<a href="http://www.uniprot.org/citations/25661590" target="\_blank">25661590</a>, PubMed:<a href="http://www.uniprot.org/citations/32453425" target="\_blank">32453425</a>, PubMed:<a href="http://www.uniprot.org/citations/34694004" target="\_blank">34694004</a>, PubMed:<a href="http://www.uniprot.org/citations/34700328" target="\_blank">34700328</a>, PubMed:<a href="http://www.uniprot.org/citations/35585232" target="\_blank">35585232</a>, PubMed:<a href="http://www.uniprot.org/citations/9305914" target="\_blank">9305914</a>). The active ATPase sites in the MCM2-7 ring are formed through the interaction surfaces of two neighboring subunits such that a critical structure of a conserved arginine finger motif is provided in trans relative to the ATP-binding site of the Walker A box of the adjacent subunit. The six ATPase active sites, however, are likely to contribute differentially to the complex helicase activity (PubMed:<a href="http://www.uniprot.org/citations/32453425" target="\_blank">32453425</a>). Required for S-phase checkpoint activation upon UV-induced damage.

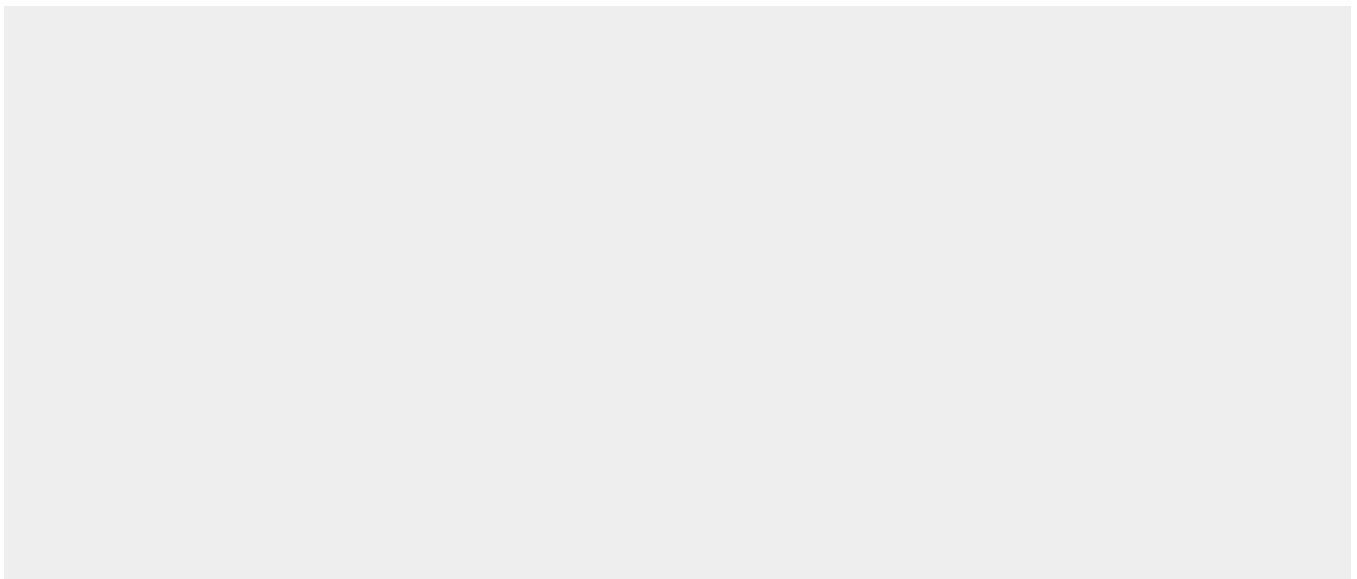
**Cellular Location**

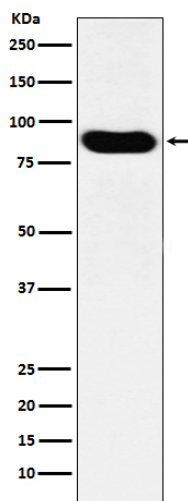
Nucleus. Chromosome. Note=Associated with chromatin before the formation of nuclei and detaches from it as DNA replication progresses.

**MCM7 Antibody - Protocols**

Provided below are standard protocols that you may find useful for product applications.

- [Western Blot](#)
- [Blocking Peptides](#)
- [Dot Blot](#)
- [Immunohistochemistry](#)
- [Immunofluorescence](#)
- [Immunoprecipitation](#)
- [Flow Cytometry](#)
- [Cell Culture](#)

**MCM7 Antibody - Images**



Western blot analysis of MCM7 expression in HeLa cell lysate.