

CD5 Antibody
Rabbit mAb
Catalog # AP91500**Specification**

CD5 Antibody - Product Information

Application	WB, IHC, ICC, IP
Primary Accession	P06127
Clonality	Monoclonal
Other Names	
CD5; CD5 antigen (p56 62); CD5 molecule; LEU1; LyA; Lymphocyte antigen T1/Leu-1; T-cell surface glycoprotein CD5; T1;	
Isotype	Rabbit IgG
Host	Rabbit
Calculated MW	54578 Da

CD5 Antibody - Additional Information

Dilution	WB~~1:1000 IHC~~1:100~500 ICC~~N/A IP~~N/A
Purification	Affinity-chromatography
Immunogen	A synthesized peptide derived from human CD5
Description	May act as a receptor in regulating T-cell proliferation. CD5 interacts with CD72/LYB-2.
Storage Condition and Buffer	Rabbit IgG in phosphate buffered saline , pH 7.4, 150mM NaCl, 0.02% sodium azide and 50% glycerol. Store at +4°C short term. Store at -20°C long term. Avoid freeze / thaw cycle.

CD5 Antibody - Protein Information**Name** CD5**Synonyms** LEU1**Function**

Lymphoid-specific receptor expressed by all T-cells and in a subset of B-cells known as B1a cells. Plays a role in the regulation of TCR and BCR signaling, thymocyte selection, T-cell effector differentiation and immune tolerance. Acts by interacting with several ligands expressed on B-cells such as CD5L or CD72 and thereby plays an important role in contact-mediated, T-dependent B-cell activation and in the maintenance of regulatory T and B-cell homeostasis. Functions as a negative regulator of TCR signaling during thymocyte development by associating with several signaling proteins including LCK, CD3Z chain, PI3K or CBL (PubMed:<a

[1384049](http://www.uniprot.org/citations/1384049), PubMed: [1385158](http://www.uniprot.org/citations/1385158)). Mechanistically, co- engagement of CD3 with CD5 enhances phosphorylated CBL recruitment leading to increased VAV1 phosphorylation and degradation (PubMed: [23376399](http://www.uniprot.org/citations/23376399)). Modulates B-cell biology through ERK1/2 activation in a Ca(2+)-dependent pathway via the non-selective Ca(2+) channel TRPC1, leading to IL-10 production (PubMed: [27499044](http://www.uniprot.org/citations/27499044)).

Cellular Location

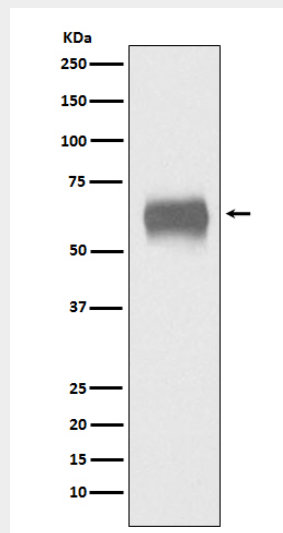
Cell membrane {ECO:0000250|UniProtKB:P13379}; Single-pass type I membrane protein {ECO:0000250|UniProtKB:P13379}

CD5 Antibody - Protocols

Provided below are standard protocols that you may find useful for product applications.

- [Western Blot](#)
- [Blocking Peptides](#)
- [Dot Blot](#)
- [Immunohistochemistry](#)
- [Immunofluorescence](#)
- [Immunoprecipitation](#)
- [Flow Cytometry](#)
- [Cell Culture](#)

CD5 Antibody - Images



Western blot analysis of CD5 expression in human plasma lysate.