

Fascin Antibody
Rabbit mAb
Catalog # AP91503

Specification

Fascin Antibody - Product Information

Application	WB, IHC, FC, ICC, IP
Primary Accession	Q16658
Reactivity	Rat
Clonality	Monoclonal

Other Names

55 kDa actin bundling protein; Actin bundling protein; FAN1; Fascin 1; Fascin; Singed (Drosophila) like (sea urchin fascin homolog like); Fascin homolog 1; Fascin;

Isotype	Rabbit IgG
Host	Rabbit
Calculated MW	54530 Da

Fascin Antibody - Additional Information

Purification	Affinity-chromatography
Immunogen	A synthesized peptide derived from human Fascin
Description	Promotes cross-linkage of parallel actin filaments during the formation of cell protrusions (lamellipodia and filopodia), and therefore plays an important role in regulating cell migration. It has been reported that fascin may also regulate filopodia formation by a mechanism independent of its actin-bundling functions, though less is known about this mechanism of action.
Storage Condition and Buffer	Rabbit IgG in phosphate buffered saline , pH 7.4, 150mM NaCl, 0.02% sodium azide and 50% glycerol. Store at +4°C short term. Store at -20°C long term. Avoid freeze / thaw cycle.

Fascin Antibody - Protein Information

Name FSCN1

Synonyms FAN1, HSN, SNL

Function

Actin-binding protein that contains 2 major actin binding sites (PubMed:21685497, PubMed:23184945). Organizes

filamentous actin into parallel bundles (PubMed:20393565, PubMed:21685497, PubMed:23184945). Plays a role in the organization of actin filament bundles and the formation of microspikes, membrane ruffles, and stress fibers (PubMed:22155786). Important for the formation of a diverse set of cell protrusions, such as filopodia, and for cell motility and migration (PubMed:20393565, PubMed:21685497, PubMed:23184945). Mediates reorganization of the actin cytoskeleton and axon growth cone collapse in response to NGF (PubMed:22155786).

Cellular Location

Cytoplasm, cytosol. Cytoplasm, cell cortex. Cytoplasm, cytoskeleton. Cytoplasm, cytoskeleton, stress fiber. Cell projection, filopodium. Cell projection, invadopodium. Cell projection, microvillus. Cell junction. Note=Colocalized with RUFY3 and F-actin at filipodia of the axonal growth cone. Colocalized with DBN1 and F- actin at the transitional domain of the axonal growth cone (By similarity). {ECO:0000250|UniProtKB:Q61553, ECO:0000269|PubMed:21706053}

Tissue Location

Ubiquitous.

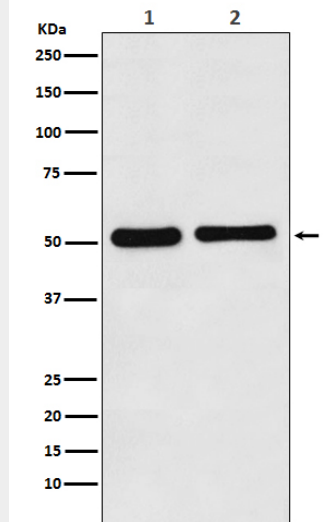
Fascin Antibody - Protocols

Provided below are standard protocols that you may find useful for product applications.

- [Western Blot](#)
- [Blocking Peptides](#)
- [Dot Blot](#)
- [Immunohistochemistry](#)
- [Immunofluorescence](#)
- [Immunoprecipitation](#)
- [Flow Cytometry](#)
- [Cell Culture](#)

Fascin Antibody - Images





Western blot analysis of Fascin expression in (1) K562 cell lysate; (2) Mouse kidney lysate.