

Placental alkaline phosphatase (PLAP) Antibody
Rabbit mAb
Catalog # AP91509**Specification**

Placental alkaline phosphatase (PLAP) Antibody - Product Information

Application	WB, IHC, ICC
Primary Accession	P05187
Clonality	Monoclonal

Other Names

Alkaline phosphatase, placental type; Alkaline phosphatase Regan isozyme; Placental alkaline phosphatase 1; PLAP-1; ALPP; PLAP;

Isotype	Rabbit IgG
Host	Rabbit
Calculated MW	57954 Da

Placental alkaline phosphatase (PLAP) Antibody - Additional Information

Dilution	WB~~1:1000 IHC~~1:100~500 ICC~~N/A
Purification	Affinity-chromatography
Immunogen	A synthesized peptide derived from human Placental alkaline phosphatase (PLAP)
Description	PLAP may assist in guiding migratory cells and transporting specific molecules, such as fatty acids and immunoglobulins, across the plasma membrane. The three tissue-specific APs identified in human, PLAP, germ cell AP (GCAP) and intestinal AP, are 90-98% homologous and their genes are clustered on chromosome 2q.
Storage Condition and Buffer	Rabbit IgG in phosphate buffered saline , pH 7.4, 150mM NaCl, 0.02% sodium azide and 50% glycerol. Store at +4°C short term. Store at -20°C long term. Avoid freeze / thaw cycle.

Placental alkaline phosphatase (PLAP) Antibody - Protein Information

Name ALPP ([HGNC:439](#))

Function

Alkaline phosphatase that can hydrolyze various phosphate compounds.

Cellular Location

Cell membrane; Lipid-anchor, GPI-anchor

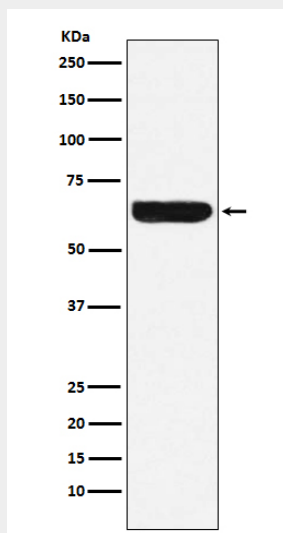
Tissue Location

Detected in placenta (at protein level).

Placental alkaline phosphatase (PLAP) Antibody - Protocols

Provided below are standard protocols that you may find useful for product applications.

- [Western Blot](#)
- [Blocking Peptides](#)
- [Dot Blot](#)
- [Immunohistochemistry](#)
- [Immunofluorescence](#)
- [Immunoprecipitation](#)
- [Flow Cytometry](#)
- [Cell Culture](#)

Placental alkaline phosphatase (PLAP) Antibody - Images

Western blot analysis of Placental alkaline phosphatase (PLAP) expression in HeLa cell lysate.