

**Ferritin Heavy Chain Antibody**  
**Rabbit mAb**  
**Catalog # AP91514****Specification**

---

**Ferritin Heavy Chain Antibody - Product Information**

Application	WB, IHC
Primary Accession	<a href="#">P02794</a>
Clonality	Monoclonal
<b>Other Names</b>	
Apoferitin; F HC; Ferritin H subunit; FHC; FRIH; FTH; FTH1; FTHL6; N-terminally processed; PIG15; PLIF;	
Isotype	Rabbit IgG
Host	Rabbit
Calculated MW	21226 Da

**Ferritin Heavy Chain Antibody - Additional Information**

Dilution	WB~~1:1000 IHC~~1:100~500
Purification	Affinity-chromatography
Immunogen	A synthesized peptide derived from human Ferritin Heavy Chain
Description	Stores iron in a soluble, non-toxic, readily available form. Important for iron homeostasis. Has ferroxidase activity. Iron is taken up in the ferrous form and deposited as ferric hydroxides after oxidation. Also plays a role in delivery of iron to cells. Mediates iron uptake in capsule cells of the developing kidney (By similarity).
Storage Condition and Buffer	Rabbit IgG in phosphate buffered saline , pH 7.4, 150mM NaCl, 0.02% sodium azide and 50% glycerol. Store at +4°C short term. Store at -20°C long term. Avoid freeze / thaw cycle.

**Ferritin Heavy Chain Antibody - Protein Information****Name** FTH1**Synonyms** FTH, FTHL6**Function**

Stores iron in a soluble, non-toxic, readily available form. Important for iron homeostasis. Has ferroxidase activity (PubMed:<a href="http://www.uniprot.org/citations/9003196" target="\_blank">9003196</a>). Iron is taken up in the ferrous form and deposited as ferric

hydroxides after oxidation (PubMed:<a href="http://www.uniprot.org/citations/9003196" target="\_blank">9003196</a>). Also plays a role in delivery of iron to cells (By similarity). Mediates iron uptake in capsule cells of the developing kidney (By similarity). Delivery to lysosomes is mediated by the cargo receptor NCOA4 for autophagic degradation and release of iron (PubMed:<a href="http://www.uniprot.org/citations/24695223" target="\_blank">24695223</a>, PubMed:<a href="http://www.uniprot.org/citations/26436293" target="\_blank">26436293</a>).

**Cellular Location**

Cytoplasm. Lysosome. Cytoplasmic vesicle, autophagosome

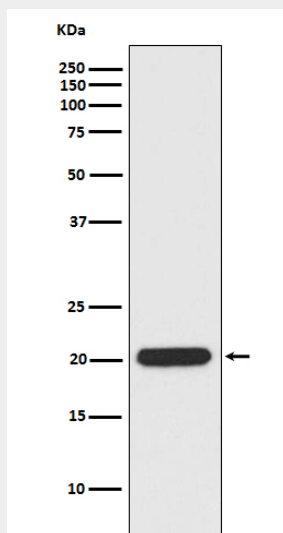
**Tissue Location**

Expressed in the liver.

**Ferritin Heavy Chain Antibody - Protocols**

Provided below are standard protocols that you may find useful for product applications.

- [Western Blot](#)
- [Blocking Peptides](#)
- [Dot Blot](#)
- [Immunohistochemistry](#)
- [Immunofluorescence](#)
- [Immunoprecipitation](#)
- [Flow Cytometry](#)
- [Cell Culture](#)

**Ferritin Heavy Chain Antibody - Images**

Western blot analysis of Ferritin Heavy Chain expression in HeLa cell lysate.