

PEX16 Antibody (Center)
Affinity Purified Rabbit Polyclonal Antibody (Pab)
Catalog # AP9151c

Specification

PEX16 Antibody (Center) - Product Information

Application	WB, IHC-P,E
Primary Accession	Q9Y5Y5
Reactivity	Human
Host	Rabbit
Clonality	Polyclonal
Isotype	Rabbit IgG
Calculated MW	38629
Antigen Region	247-275

PEX16 Antibody (Center) - Additional Information

Gene ID 9409

Other Names

Peroxisomal membrane protein PEX16, Peroxin-16, Peroxisomal biogenesis factor 16, PEX16

Target/Specificity

This PEX16 antibody is generated from rabbits immunized with a KLH conjugated synthetic peptide between 247-275 amino acids from the Central region of human PEX16.

Dilution

WB~~1:1000

IHC-P~~1:50~100

E~~Use at an assay dependent concentration.

Format

Purified polyclonal antibody supplied in PBS with 0.09% (W/V) sodium azide. This antibody is purified through a protein A column, followed by peptide affinity purification.

Storage

Maintain refrigerated at 2-8°C for up to 2 weeks. For long term storage store at -20°C in small aliquots to prevent freeze-thaw cycles.

Precautions

PEX16 Antibody (Center) is for research use only and not for use in diagnostic or therapeutic procedures.

PEX16 Antibody (Center) - Protein Information

Name PEX16

Function Required for peroxisome membrane biogenesis. May play a role in early stages of

peroxisome assembly. Can recruit other peroxisomal proteins, such as PEX3 and PMP34, to de novo peroxisomes derived from the endoplasmic reticulum (ER). May function as receptor for PEX3.

Cellular Location

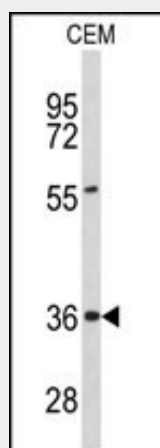
Peroxisome membrane; Multi-pass membrane protein

PEX16 Antibody (Center) - Protocols

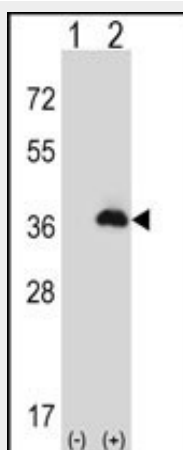
Provided below are standard protocols that you may find useful for product applications.

- [Western Blot](#)
- [Blocking Peptides](#)
- [Dot Blot](#)
- [Immunohistochemistry](#)
- [Immunofluorescence](#)
- [Immunoprecipitation](#)
- [Flow Cytometry](#)
- [Cell Culture](#)

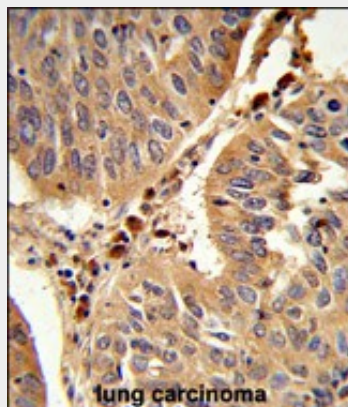
PEX16 Antibody (Center) - Images



Western blot analysis of PEX16 Antibody (Center) (Cat. #AP9151c) in CEM cell line lysates (35ug/lane). PEX16 (arrow) was detected using the purified Pab.



Western blot analysis of PEX16 (arrow) using rabbit polyclonal PEX16 Antibody (Center) (Cat. #AP9151c). 293 cell lysates (2 ug/lane) either nontransfected (Lane 1) or transiently transfected (Lane 2) with the PEX16 gene.



Formalin-fixed and paraffin-embedded human lung carcinoma reacted with PEX16 Antibody (Center), which was peroxidase-conjugated to the secondary antibody, followed by DAB staining. This data demonstrates the use of this antibody for immunohistochemistry; clinical relevance has not been evaluated.

PEX16 Antibody (Center) - Background

PEX16 is required for peroxisome membrane biogenesis. It may play a role in early stages of peroxisome assembly and can recruit other peroxisomal proteins, such as PEX3 and PMP34, to de novo peroxisomes derived from the endoplasmic reticulum (ER). It may function as receptor for PEX3.

PEX16 Antibody (Center) - References

Kim P.K., et.al., J. Cell Biol. 173:521-532(2006).