

**Hemopexin Antibody**  
**Rabbit mAb**  
**Catalog # AP91521**

**Specification**

---

**Hemopexin Antibody - Product Information**

Application	WB, IHC, ICC, IP
Primary Accession	<a href="#">P02790</a>
Clonality	Monoclonal
<b>Other Names</b>	
Beta 1B glycoprotein; HEMO; Hemopexin; Hpx;	
Isotype	Rabbit IgG
Host	Rabbit
Calculated MW	51676 Da

**Hemopexin Antibody - Additional Information**

Dilution	WB~~1:1000 IHC~~1:100~500 ICC~~N/A IP~~N/A
Purification	Affinity-chromatography
Immunogen	A synthesized peptide derived from human Hemopexin
Description	Binds heme and transports it to the liver for breakdown and iron recovery, after which the free hemopexin returns to the circulation.
Storage Condition and Buffer	Rabbit IgG in phosphate buffered saline , pH 7.4, 150mM NaCl, 0.02% sodium azide and 50% glycerol. Store at +4°C short term. Store at -20°C long term. Avoid freeze / thaw cycle.

**Hemopexin Antibody - Protein Information**

**Name** HPX

**Function**

Binds heme and transports it to the liver for breakdown and iron recovery, after which the free hemopexin returns to the circulation.

**Cellular Location**

Secreted.

**Tissue Location**

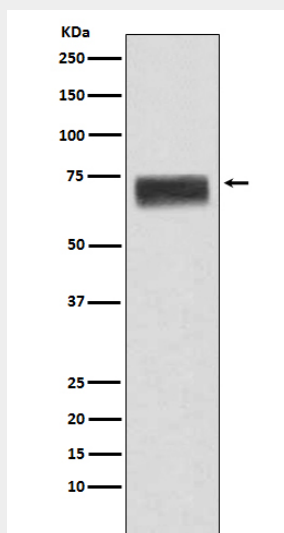
Expressed by the liver and secreted in plasma.

## Hemopexin Antibody - Protocols

Provided below are standard protocols that you may find useful for product applications.

- [Western Blot](#)
- [Blocking Peptides](#)
- [Dot Blot](#)
- [Immunohistochemistry](#)
- [Immunofluorescence](#)
- [Immunoprecipitation](#)
- [Flow Cytometry](#)
- [Cell Culture](#)

## Hemopexin Antibody - Images



Western blot analysis of Hemopexin expression in human fetal liver lysate.