

KAT9 / Elp3 Antibody
Rabbit mAb
Catalog # AP91523**Specification****KAT9 / Elp3 Antibody - Product Information**

Application	WB, ICC, IP
Primary Accession	O9H9T3
Reactivity	Rat
Clonality	Monoclonal

Other Names

Elongation protein 3 homolog; elp3; hELP3; Kat9;

Isotype	Rabbit IgG
Host	Rabbit
Calculated MW	62259 Da

KAT9 / Elp3 Antibody - Additional Information

Dilution	WB~~1:1000 ICC~~N/A IP~~N/A
Purification	Affinity-chromatography
Immunogen	A synthesized peptide derived from human KAT9 / Elp3
Description	Catalytic histone acetyltransferase subunit of the RNA polymerase II elongator complex, which is a component of the RNA polymerase II (Pol II) holoenzyme and is involved in transcriptional elongation. Elongator may play a role in chromatin remodeling and is involved in acetylation of histones H3 and probably H4. May also have a methyltransferase activity.
Storage Condition and Buffer	Rabbit IgG in phosphate buffered saline , pH 7.4, 150mM NaCl, 0.02% sodium azide and 50% glycerol. Store at +4°C short term. Store at -20°C long term. Avoid freeze / thaw cycle.

KAT9 / Elp3 Antibody - Protein Information**Name** ELP3 {ECO:0000303|PubMed:15902492, ECO:0000312|HGNC:HGNC:20696}**Function**

Catalytic tRNA acetyltransferase subunit of the elongator complex which is required for multiple tRNA modifications, including mcm5U (5-methoxycarbonylmethyl uridine), mcm5s2U (5-methoxycarbonylmethyl-2-thiouridine), and ncm5U (5-carbamoylmethyl uridine) (PubMed:29415125). In the

elongator complex, acts as a tRNA uridine(34) acetyltransferase by mediating formation of carboxymethyluridine in the wobble base at position 34 in tRNAs (By similarity). May also act as a protein lysine acetyltransferase by mediating acetylation of target proteins; such activity is however unclear in vivo and recent evidences suggest that ELP3 primarily acts as a tRNA acetyltransferase (PubMed:29415125). Involved in neurogenesis: regulates the migration and branching of projection neurons in the developing cerebral cortex, through a process depending on alpha-tubulin acetylation (PubMed:19185337). Required for acetylation of GJA1 in the developing cerebral cortex (By similarity).

Cellular Location

Cytoplasm. Nucleus [Isoform 2]: Cytoplasm. Nucleus

Tissue Location

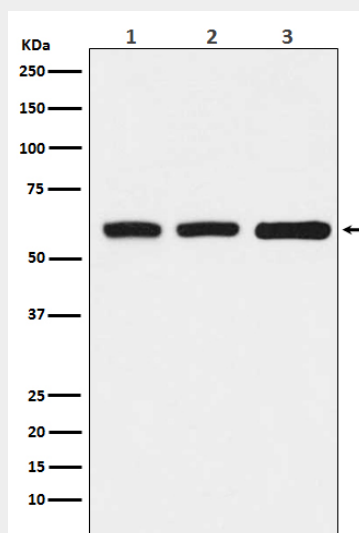
Expressed in the cerebellum and spinal motor neurons.

KAT9 / Elp3 Antibody - Protocols

Provided below are standard protocols that you may find useful for product applications.

- [Western Blot](#)
- [Blocking Peptides](#)
- [Dot Blot](#)
- [Immunohistochemistry](#)
- [Immunofluorescence](#)
- [Immunoprecipitation](#)
- [Flow Cytometry](#)
- [Cell Culture](#)

KAT9 / Elp3 Antibody - Images



Western blot analysis of KAT9 / Elp3 expression in (1) HeLa cell lysate; (2) RAW264.7 cell lysate; (3) Rat kidney lysate.